

Lifting Capacities

Telescopic Boom Rough Terrain Crane

RTC-8060 60-ton (54.43 metric ton)

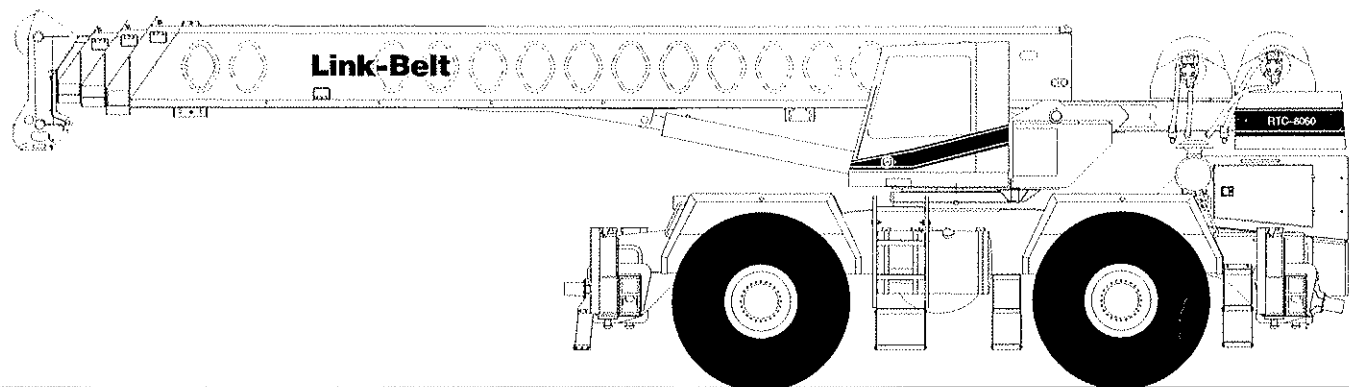
Boom and fly capacities for this machine are listed by the following sections:

Fully Extended Outriggers

- Working Range Diagram (13,000 lbs. Counterweight)
- 35.5' – 60.3' (10.82 – 18.38 m) Main Boom Capacities, **A-max** Mode
- 35.5' – 110' (10.82 – 33.53 m) Main Boom Capacities, Basic Mode "B"
- 34' (10.36 m) Offset Fly Capacities, Basic Mode "B"
- 34' – 56' (10.36 – 17.07 m) Two-piece Offset Fly Capacities, Basic Mode "B"

On Tires

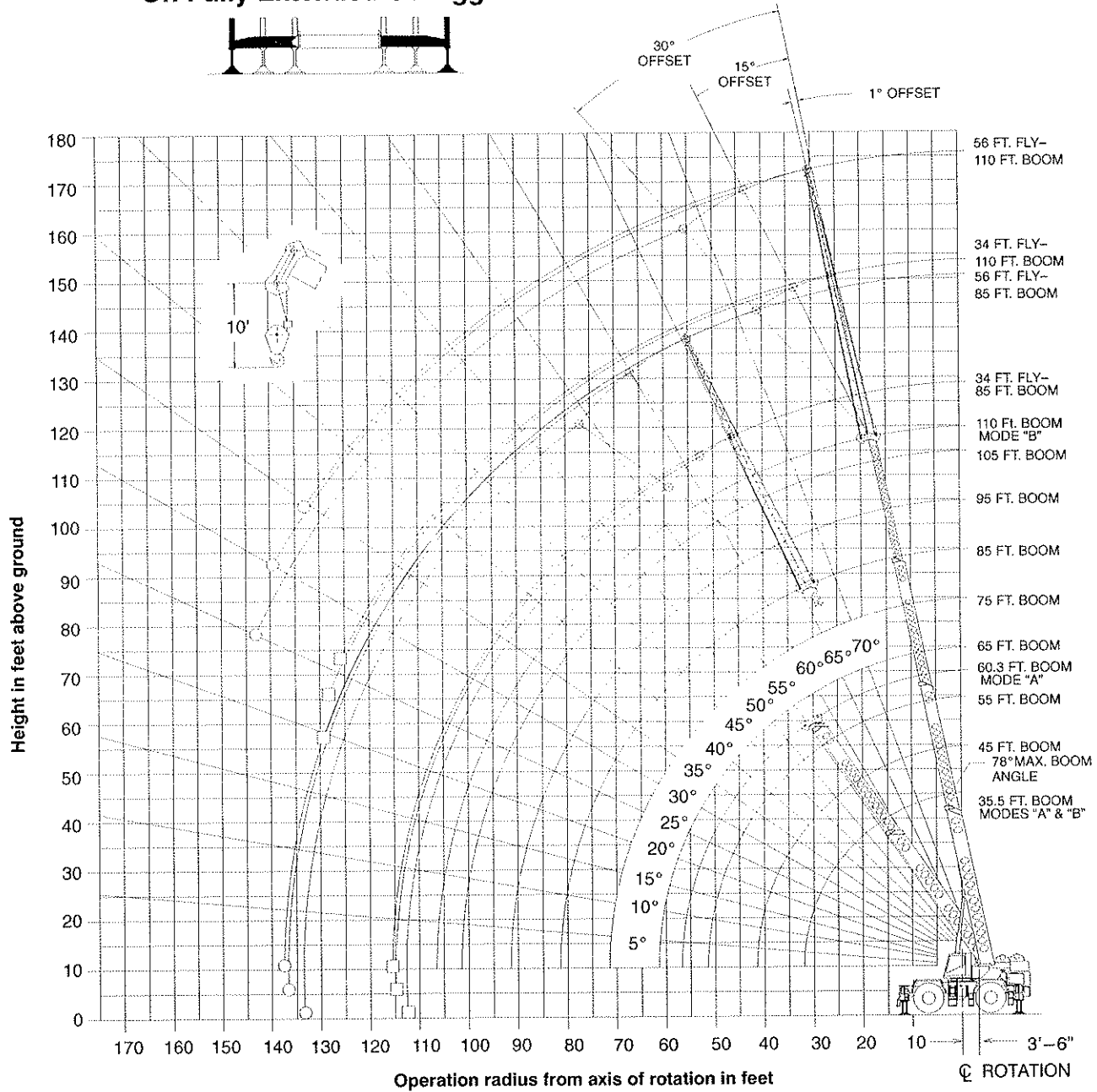
- Working Range Diagram (13,000 lbs. Counterweight)
- 35.5' – 60.3' (10.82 – 18.38 m) Main Boom Capacities, **A-max** Mode
- 35.5' – 110' (10.82 – 33.53 m) Main Boom Capacities, Basic Mode "B"



CAUTION: This material is supplied for reference use only. Operator must refer to in-cab Crane Rating Manual to determine allowable machine lifting capacities and operating procedures.

WORKING RANGE DIAGRAM

Working Range Diagram
On Fully Extended Outriggers



- Denotes Main Boom + 56' Fly-Boom Mode "B"
- Denotes Main Boom + 34' Fly-Boom Mode "B"

Note: Boom and fly geometry shown are for unloaded condition and crane standing level on firm supporting surface. Boom deflection, subsequent radius and boom angle change must be accounted for when applying load to hook.

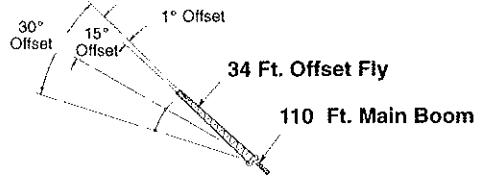
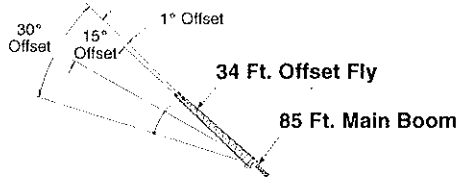
WARNING

Do Not Lower The Boom Below The Minimum Boom Angle For No Load As Shown In The Above Chart For The Boom Lengths Shown. Loss Of Stability Will Occur Causing A Tipping Condition.

Note: Refer To Page 3 For "Lifting Capacity Deductions" For Capacity Reductions Caused By Stowed Or Erected Auxiliary Load Handling Equipment. * This Capacity Based On Maximum Obtainable Boom Angle.

Boom Mode "A"		Rated Lifting Capacities In Pounds On Fully Extended Outriggers. See Set Up Note 2.				
Load Radius (ft)	Loaded Boom Angle (Deg.)	35.5 Ft.		45 Ft.		
		360°	Over Front	Loaded Boom Angle (Deg.)	360°	Over Front
10	68.5	120,000	120,000	73.5	87,200	87,200
12	65.0	106,800	106,800	71.0	87,200	87,200
15	59.5	90,800	90,800	66.5	82,500	82,500
20	49.5	71,400	71,400	59.5	67,400	67,400
25	37.5	55,800	56,300	51.5	55,100	55,600
30	20.0	38,700	40,500	43.0	38,300	40,500
35				32.0	28,300	32,700
40				15.5	21,800	25,200
Min. Boom Angle/Cap.	0°	20,900	20,900	0°	14,000	14,000
Load Radius (ft)	Loaded Boom Angle (Deg.)	55 Ft.		60.3 Ft.		
		360°	Over Front	Loaded Boom Angle (Deg.)	360°	Over Front
10	77.0	79,700	79,700	76.5	61,400	61,400
12	75.0	72,400	72,400	73.5	57,600	57,600
15	71.5	63,500	63,500	68.5	47,100	47,100
20	66.0	52,300	52,300	63.0	39,500	39,500
25	60.0	44,200	44,200	57.5	33,900	33,900
30	53.5	37,800	38,000	51.5	27,700	29,700
35	47.0	27,900	32,300	45.0	21,400	24,800
40	39.0	21,500	24,900	37.5	16,800	19,600
45	29.0	17,000	19,700	28.5	13,400	15,800
50	14.5	13,500	15,800	15.0	10,800	12,800
Min. Boom Angle/Cap.	0°	9,000	9,000	0°	7,100	7,100

Boom Mode "B"		Rated Lifting Capacities In Pounds On Fully Extended Outriggers. See Set Up Note 2.								
Load Radius (ft)	Loaded Boom Angle (Deg.)	35.5 Ft.		45 Ft.			55 Ft.			
		360°	Over Front	Loaded Boom Angle (Deg.)	360°	Over Front	Loaded Boom Angle (Deg.)	360°	Over Front	
10	68.5	120,000	120,000	73.0	42,000	42,000	76.5	42,000	42,000	
12	65.0	106,800	106,800	70.5	42,000	42,000	74.5	42,000	42,000	
15	59.5	90,800	90,800	66.5	42,000	42,000	71.5	42,000	42,000	
20	49.5	71,400	71,400	59.5	42,000	42,000	66.0	42,000	42,000	
25	37.5	55,800	56,300	51.5	42,000	42,000	60.0	42,000	42,000	
30	20.0	38,700	40,500	43.0	39,800	40,500	53.5	40,400	40,600	
35				32.0	29,800	34,200	46.5	30,400	34,800	
40				15.5	23,100	26,500	38.5	23,800	27,200	
45							29.0	19,100	22,000	
50							14.0	15,600	18,000	
Min. Boom Angle/Cap.	0°	20,900	20,900	0°	15,100	15,100	0°	10,900	10,900	
Load Radius (ft)	Loaded Boom Angle (Deg.)	65 Ft.		75 Ft.			85 Ft.			
		360°	Over Front	Loaded Boom Angle (Deg.)	360°	Over Front	Loaded Boom Angle (Deg.)	360°	Over Front	
12	77.0	42,000	42,000	77.0	42,000	42,000				
15	74.5	42,000	42,000	73.0	42,000	42,000	75.5	36,000	36,000	
20	70.0	42,000	42,000	69.0	41,700	41,700	72.0	31,500	31,500	
25	65.5	42,000	42,000	65.0	37,100	37,100	68.5	28,200	28,200	
30	60.5	40,700	40,500	60.5	30,900	32,500	64.5	25,400	25,400	
35	55.0	30,700	35,100	56.0	24,400	27,800	61.0	23,000	23,000	
40	49.0	24,200	27,600	51.0	19,700	22,600	57.0	19,900	21,100	
45	43.0	19,500	22,300	46.0	16,300	18,700	52.5	16,400	18,800	
50	35.5	16,000	18,400	40.0	13,600	15,600	48.0	13,700	15,800	
55	27.0	13,300	15,400	33.5	11,500	13,200	43.0	11,700	13,400	
60	13.5	11,100	12,900	25.0	9,700	11,300	38.0	9,900	11,500	
65				12.5	8,200	9,700	31.5	8,400	9,900	
70							24.0	7,200	8,500	
75							12.0	6,100	7,300	
80										
Min. Boom Angle/Cap.	0°	8,000	8,000	0°	5,900	5,900	0°	4,300	4,300	
Load Radius (ft)	Loaded Boom Angle (Deg.)	95 Ft.		105 Ft.			110 Ft.			
		360°	Over Front	Loaded Boom Angle (Deg.)	360°	Over Front	Loaded Boom Angle (Deg.)	360°	Over Front	
20	77.5	31,800	31,800	76.0	25,700	25,700	77.0	22,500	22,500	
25	74.5	28,300	28,300	73.5	23,100	23,100	74.5	22,200	22,200	
30	71.0	25,300	25,300	70.5	20,900	20,900	72.0	20,100	20,100	
35	68.0	22,900	22,900	67.5	19,000	19,000	69.0	18,300	18,300	
40	64.5	20,800	20,800	65.0	17,400	17,400	66.0	16,700	16,700	
45	61.5	19,000	19,000	61.5	15,900	15,900	63.5	15,200	15,200	
50	58.0	16,500	17,500	58.5	13,900	14,700	60.5	13,900	13,900	
55	54.0	13,800	15,900	55.0	11,900	13,600	57.0	11,900	12,500	
60	50.0	11,800	13,500	51.5	10,100	11,800	54.0	10,200	11,200	
65	45.5	10,000	11,700	48.0	8,700	10,100	50.5	8,700	10,100	
70	41.0	8,600	10,000	43.5	7,400	8,800	47.0	7,500	8,800	
75	36.0	7,300	8,700	39.5	6,400	7,600	43.0	6,400	7,700	
80	30.0	6,300	7,500	34.5	5,500	6,600	38.5	5,500	6,700	
85	23.0	5,400	6,500	29.0	4,700	5,700	34.0	4,700	5,800	
90	12.0	4,500	5,600	22.0	4,000	4,900	28.5	4,000	5,000	
95				11.5	3,300	4,200	22.0	3,400	4,300	
100										
105										
Min. Boom Angle/Cap.	0°	3,100	3,100	0°	2,100	2,100	0°	1,700	1,700	



Boom Mode "B"
Rated Lifting Capacities In Pounds On Fully Extended Outriggers. See Set Up Note 2.

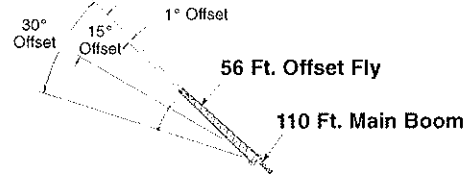
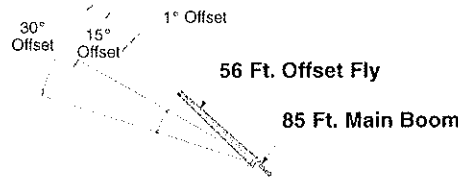
Boom Mode "B"
Rated Lifting Capacities In Pounds On Fully Extended Outriggers. See Set Up Note 2.

Load Radius (ft)	1° Offset		15° Offset		30° Offset	
	Loaded Boom Angle (Deg.)	360°	Loaded Boom Angle (Deg.)	360°	Loaded Boom Angle (Deg.)	360°
25	77.5	18,600				
30	75.0	17,000				
35	73.0	15,600				
40	70.5	14,500				
45	68.0	13,600	74.5	12,000		
50	65.5	12,700	71.5	11,400	77.5	9,400
55	62.5	11,900	70.0	10,800	75.0	9,100
60	60.0	11,100	69.0	10,400	72.5	8,800
65	57.0	10,300	68.5	9,900	70.0	8,400
70	54.0	9,600	67.5	9,500	67.0	8,100
75	51.0	8,600	66.5	9,100	64.0	7,800
80	47.5	7,500	65.5	8,800	61.0	7,500
85	44.0	6,600	64.5	8,400	58.0	7,300
90	40.0	5,800	63.5	8,000	55.5	7,100
95	36.0	5,100	62.5	7,000	51.0	6,900
100	31.5	4,400	61.5	6,100	47.0	6,400
105	26.0	3,900	60.5	5,400	42.5	5,600
110	19.5	3,400	59.5	4,700	37.5	4,900
			58.0	4,100	31.5	4,200
			57.0	3,500	23.0	3,500
Min. Boom Angle/Cap.	0°	1,800	0°	1,800	0°	1,900

Load Radius (ft)	1° Offset		15° Offset		30° Offset	
	Loaded Boom Angle (Deg.)	360°	Loaded Boom Angle (Deg.)	360°	Loaded Boom Angle (Deg.)	360°
35	76.5	10,500				
40	74.5	10,500				
45	72.5	10,500	76.0	9,800		
50	70.5	9,800	74.0	9,000	77.0	8,300
55	68.5	8,900	71.5	8,200	75.0	7,700
60	66.5	8,200	69.5	7,600	72.5	7,100
65	64.0	7,500	67.5	7,000	70.5	6,600
70	62.0	6,900	65.0	6,500	68.0	6,200
75	59.5	6,400	63.0	6,100	65.5	5,800
80	57.5	6,000	60.5	5,700	63.0	5,500
85	55.0	5,600	58.0	5,300	60.5	5,100
90	52.5	5,100	55.5	5,000	58.0	4,800
95	49.5	4,700	53.0	4,700	55.5	4,600
100	47.0	4,200	50.0	4,300	52.5	4,300
105	43.5	3,600	47.0	3,900	49.5	4,000
110	40.5	3,100	43.5	3,400	46.0	3,600
115	37.0	2,600	40.5	2,900	42.5	3,100
120	33.5	2,200	36.5	2,400	38.5	2,600
125	29.5	1,800	32.5	2,000	34.0	2,100
130			27.5	1,600	28.5	1,700

WARNING

Do Not Lower 34 Ft. Offset Fly In Working Position Below 26° Main Boom Angle Unless Main Boom Length is 98 Ft. Or Less, Since Loss Of Stability Will Occur Causing A Tipping Condition.



Boom Mode "B"
Rated Lifting Capacities In Pounds On Fully Extended Outriggers. See Set Up Note 2.

Boom Mode "B"
Rated Lifting Capacities In Pounds On Fully Extended Outriggers. See Set Up Note 2.

Load Radius (ft)	1° Offset		15° Offset		30° Offset	
	Loaded Boom Angle (Deg.)	360°	Loaded Boom Angle (Deg.)	360°	Loaded Boom Angle (Deg.)	360°
35	76.5	11,100				
40	74.5	10,500				
45	72.5	9,600	77.5	7,100		
50	70.0	8,800	75.5	6,700		
55	68.0	8,100	73.0	6,300		
60	66.0	7,600	71.0	5,900	76.0	4,800
65	63.5	7,000	69.0	5,600	74.0	4,600
70	61.5	6,600	66.5	5,300	71.5	4,500
75	59.0	6,200	64.0	5,100	69.0	4,300
80	56.5	5,800	61.5	4,800	66.5	4,100
85	54.0	5,500	59.0	4,600	64.0	4,000
90	51.5	5,200	56.5	4,400	61.5	3,900
95	49.0	4,900	54.0	4,300	58.5	3,800
100	46.0	4,700	51.0	4,100	55.5	3,700
105	43.0	4,400	48.0	3,900	52.0	3,600
110	39.5	4,000	44.5	3,800	49.0	3,500
115	36.0	3,500	41.0	3,700	45.0	3,400
120	32.0	3,100	37.0	3,300	40.5	3,400
125	27.5	2,700	32.5	2,900	35.0	3,000
130	22.0	2,300	26.5	2,500	28.0	2,500
135	14.5	2,000	18.0	2,100		
Min. Boom Angle/Cap.	0°	900	0°	900	0°	1,000

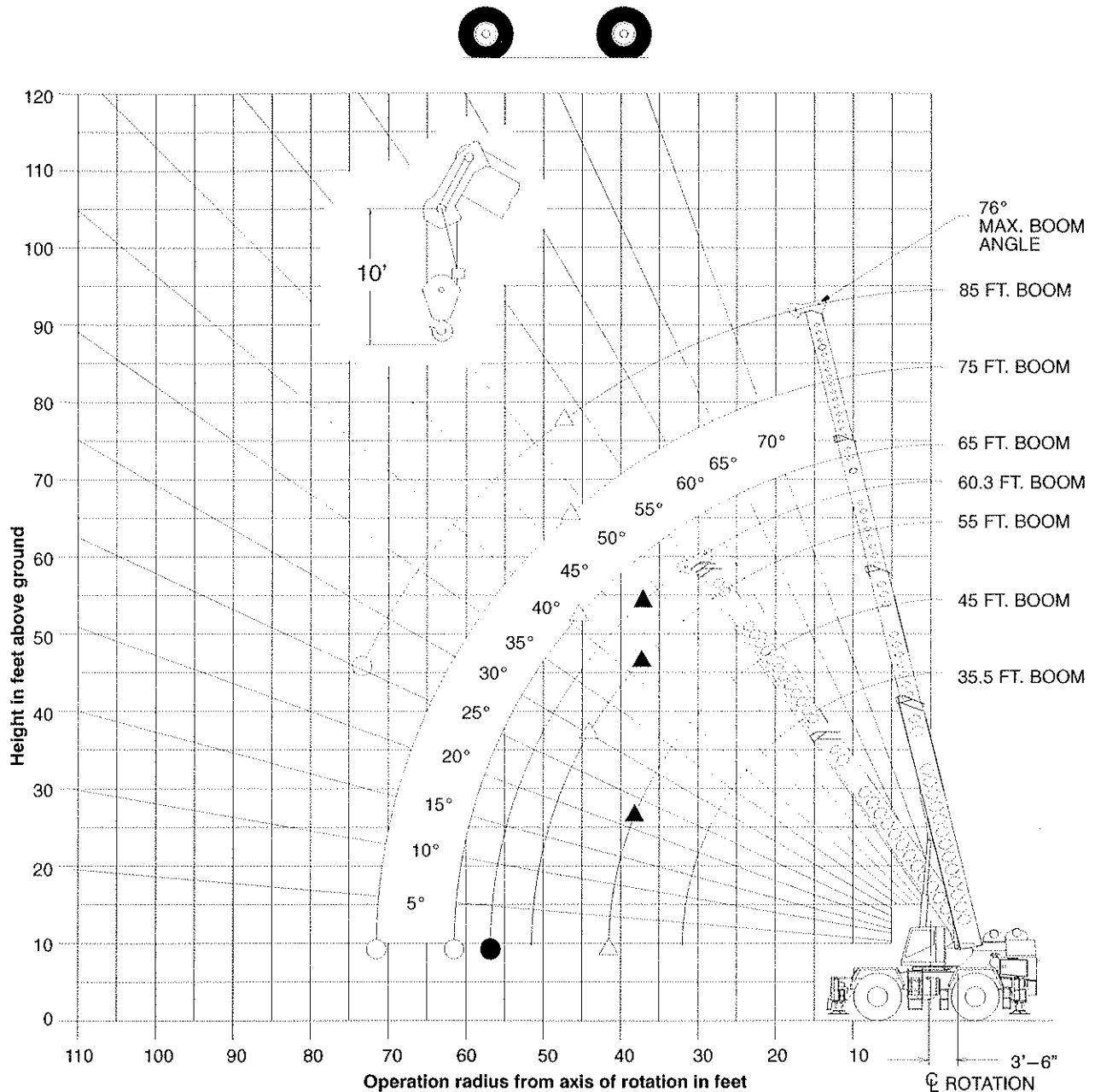
Load Radius (ft)	1° Offset		15° Offset		30° Offset	
	Loaded Boom Angle (Deg.)	360°	Loaded Boom Angle (Deg.)	360°	Loaded Boom Angle (Deg.)	360°
40	77.0	7,000				
45	75.5	7,000				
50	74.0	7,000				
55	72.5	7,000	77.5	6,400		
60	71.0	6,400	75.5	5,900		
65	69.0	5,900	73.5	5,400	78.0°	5,000
70	67.0	5,400	71.5	5,000	76.0	4,600
75	65.0	5,000	70.0	4,600	74.0	4,300
80	63.0	4,600	68.0	4,300	72.0	4,000
85	61.5	4,300	66.0	4,000	70.0	3,800
90	59.5	4,000	64.0	3,700	68.0	3,500
95	57.0	3,700	61.5	3,500	66.0	3,300
100	55.0	3,500	59.5	3,300	63.5	3,100
105	53.0	3,300	57.5	3,100	61.5	2,900
110	50.5	3,100	55.0	2,900	59.0	2,800
115	48.5	2,900	53.0	2,700	56.5	2,600
120	46.0	2,600	50.5	2,600	54.0	2,500
125	43.0	2,300	47.5	2,400	51.0	2,300
130	40.5	1,900	45.0	2,200	48.0	2,100
135	37.5	1,600	42.0	1,900	45.0	1,900
140			38.5	1,500	41.5	1,700
145					37.0	1,400

WARNING

Do Not Lower 56 Ft. Offset Fly In Working Position Below 34.5° Main Boom Angle Unless Main Boom Length is 89 Ft. Or Less, Since Loss Of Stability Will Occur Causing A Tipping Condition.

WORKING RANGE DIAGRAM

Working Range Diagram
On Tires



- Denotes Main Boom—Between Tire Tracks Or Centered Over Front — Boom Mode "B"
- Denotes Main Boom—Between Tire Tracks Or Centered Over Front — Boom Mode "A"
- △ Denotes Main Boom—360°—Boom Mode "B"
- ▲ Denotes Main Boom—360°—Boom Mode "A"

Note: Boom geometry shown is for unloaded condition and crane standing level on firm supporting surface. Boom deflection, subsequent radius and boom angle change must be accounted for when applying load to hook.

WARNING

Do Not Lower The Boom Below The Minimum Boom Angle For No Load As Shown In The Above Chart For The Boom Lengths Shown. Loss Of Stability Will Occur Causing A Tipping Condition. Do not exceed 76° boom angle while over side on tires to prevent tipping backwards.

On Tire Capacities In Pounds Tire Pressure: See page 3. Stationary Capacities - Over Front - Between Tire Tracks See Operation Note 19.				
Boom Mode "A"				
Load Radius (ft)	35.5 Ft.		45 Ft.	
	Loaded Boom Angle (Deg.)	Load	Loaded Boom Angle (Deg.)	Load
10	68.5	72,700		
12	65.0	64,400		
15	59.5	54,100	66.5	53,300
20	49.5	37,100	59.5	36,400
25	37.5	24,800	51.5	24,300
30	20.0	17,700	42.5	17,300
35			32.0	12,800
40			15.5	9,600
Min. Boom Angle/Cap.	0°	15,400	0°	8,600
Load Radius (ft)	55 Ft.		60.3 Ft.	
	Loaded Boom Angle (Deg.)	Load	Loaded Boom Angle (Deg.)	Load
20	65.5	35,800		
25	59.5	23,800	62.5	23,600
30	53.5	16,900	57.0	16,800
35	46.5	12,500	51.0	12,400
40	38.5	9,400	44.5	9,300
45	29.0	7,000	37.0	7,000
50	14.0	5,200	28.0	5,200
55			15.0	3,700
Min. Boom Angle/Cap.	0°	4,600	0°	3,100

On Tire Capacities In Pounds Tire Pressure: See Page 3. Pick & Carry (2.5 MPH) - Boom Centered Over Rear Tire Pressure: See Operation Note 19.				
Boom Mode "A"				
Load Radius (ft)	35.5 Ft.		45 Ft.	
	Loaded Boom Angle (Deg.)	Load	Loaded Boom Angle (Deg.)	Load
10	68.5	54,700		
12	65.0	47,600		
15	59.5	39,300	66.5	38,700
20	49.5	29,800	59.0	29,300
25	37.5	23,400	51.5	22,900
30	20.0	17,700	42.5	17,300
35			32.0	12,800
40			15.5	9,600
Min. Boom Angle/Cap.	0°	15,400	0°	8,600
Load Radius (ft)	55 Ft.		60.3 Ft.	
	Loaded Boom Angle (Deg.)	Load	Loaded Boom Angle (Deg.)	Load
20	65.5	28,900		
25	59.5	22,600	62.5	22,400
30	53.5	16,900	57.0	16,800
35	46.5	12,500	51.0	12,400
40	38.5	9,400	44.5	9,300
45	29.0	7,000	37.0	7,000
50	14.0	5,200	28.0	5,200
55			15.0	3,700
Min. Boom Angle/Cap.	0°	4,600	0°	3,100

On Tire Capacities In Pounds Tire Pressure: See page 3. Stationary Capacities - Over Front - Between Tire Tracks See Operation Note 19.						
Boom Mode "B"						
Load Radius (ft)	35.5 Ft.		45 Ft.		55 Ft.	
	Loaded Boom Angle (Deg.)	Load	Loaded Boom Angle (Deg.)	Load	Loaded Boom Angle (Deg.)	Load
10	68.5	72,700				
12	65.0	64,400				
15	59.5	54,100	66.5	42,000		
20	49.5	37,100	59.0	37,800	65.5	38,200
25	37.5	24,800	51.5	25,500	59.5	25,900
30	20.0	17,700	42.5	18,500	53.0	18,900
35			32.0	13,900	46.0	14,300
40			15.5	10,600	38.5	11,200
45					28.5	8,800
50					14.0	6,900
Min. Boom Angle/Cap.	0°	15,400	0°	9,700	0°	6,300
Load Radius (ft)	65 Ft.		75 Ft.		85 Ft.	
	Loaded Boom Angle (Deg.)	Load	Loaded Boom Angle (Deg.)	Load	Loaded Boom Angle (Deg.)	Load
25	65.0	26,100				
30	59.5	19,100	64.5	19,300		
35	54.5	14,600	60.0	14,700	64.0	14,900
40	48.5	11,400	55.5	11,600	60.5	11,700
45	42.5	9,100	50.5	9,200	56.0	9,400
50	35.5	7,200	45.5	7,400	52.0	7,600
55	26.5	5,800	39.5	6,000	47.5	6,100
60	13.0	4,500	33.0	4,800	42.5	4,900
65			25.0	3,800	37.0	4,000
70			12.0	2,900	31.0	3,100
Min. Boom Angle/Cap.	0°	4,100	0°	2,700	25.5	

On Tire Capacities In Pounds Tire Pressure: See Page 3. Pick & Carry (2.5 MPH) - Boom Centered Over Rear Tire Pressure: See Operation Note 19.						
Boom Mode "B"						
Load Radius (ft)	35.5 Ft.		45 Ft.		55 Ft.	
	Loaded Boom Angle (Deg.)	Load	Loaded Boom Angle (Deg.)	Load	Loaded Boom Angle (Deg.)	Load
10	68.5	54,700				
12	65.0	47,600				
15	59.5	39,300	66.5	39,300		
20	49.5	29,800	59.0	29,800	65.5	29,800
25	37.5	23,400	51.5	23,400	59.5	23,400
30	20.0	17,700	42.5	18,500	53.0	18,900
35			32.0	13,900	46.0	14,300
40			15.5	10,600	38.5	11,200
45					28.5	8,800
50					14.0	6,900
Min. Boom Angle/Cap.	0°	15,400	0°	9,700	0°	6,300
Load Radius (ft)	65 Ft.		75 Ft.		85 Ft.	
	Loaded Boom Angle (Deg.)	Load	Loaded Boom Angle (Deg.)	Load	Loaded Boom Angle (Deg.)	Load
25	65.0	23,400				
30	59.5	19,100	64.5	19,300		
35	54.5	14,600	60.0	14,700	64.0	14,900
40	48.5	11,400	55.5	11,600	60.5	11,700
45	42.5	9,100	50.5	9,200	56.0	9,400
50	35.5	7,200	45.5	7,400	52.0	7,600
55	26.5	5,800	39.5	6,000	47.5	6,100
60	13.0	4,500	33.0	4,800	42.5	4,900
65			25.0	3,800	37.0	4,000
70			12.0	2,900	31.0	3,100
Min. Boom Angle/Cap.	0°	4,100	0°	2,700	25.5°	

On Tire Capacities in Pounds
 Tire Pressure : See Page 3.
 Stationary Capacities – 360 Degree
 See Operation Note 19.

Load Radius (ft)	35.5 Ft.		45 Ft.	
	Loaded Boom Angle (Deg.)	Load	Loaded Boom Angle (Deg.)	Load
10	68.5	53,000	66.5	26,100
12	65.0	39,000		
15	59.5	26,800		
20	49.0	16,400		
25	37.5	10,700		
30	20.0	7,100		
35				
Min. Boom Angle/Cap.	0°	5,800	22.5°	
Load Radius (ft)	55 Ft.		60.3 Ft.	
	Loaded Boom Angle (Deg.)	Load	Loaded Boom Angle (Deg.)	Load
15			62.5	9,800
20	65.5	15,400		
25	59.5	9,900		
30	53.0	6,500		
35	46.0	4,200		
Min. Boom Angle/Cap.	42.5°		48.0°	

On Tire Capacities in Pounds
 Tire Pressure : See Page 3.
 Stationary Capacities – 360 Degree
 See Operation Note 19.

Load Radius (ft)	35.5 Ft.		45 Ft.		55 Ft.	
	Loaded Boom Angle (Deg.)	Load	Loaded Boom Angle (Deg.)	Load	Loaded Boom Angle (Deg.)	Load
10	68.5	53,000	66.5	27,400	65.5	17,300
12	65.0	39,000				
15	59.5	26,800				
20	49.0	16,400				
25	37.5	10,700				
30	20.0	7,100				
35						
40			15.5	3,600	38.0	4,100
Min. Boom Angle/Cap.	0°	5,800	0°	3,000	30.5°	
Load Radius (ft)	65 Ft.		75 Ft.		85 Ft.	
	Loaded Boom Angle (Deg.)	Load	Loaded Boom Angle (Deg.)	Load	Loaded Boom Angle (Deg.)	Load
20			64.0	8,600	64.0	6,300
25	64.5	12,000				
30	59.5	8,500				
35	54.0	6,100				
40	48.5	4,300				
45	42.5	3,000				
Min. Boom Angle/Cap.	41.5°					