

# Lifting Capacities

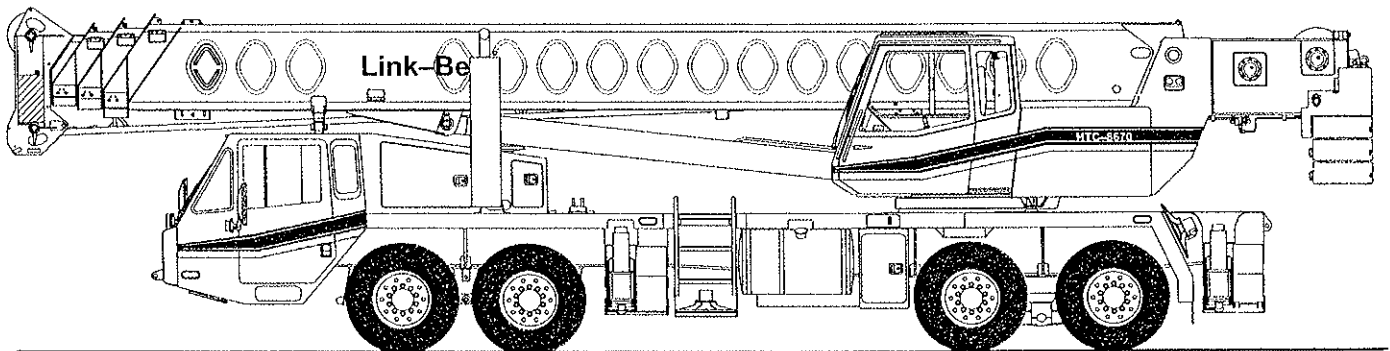
Telescopic Hydraulic Truck Crane

## **HTC-8670**      70-ton (63.5 metric ton)

Boom and fly capacities for this machine are listed by the following sections:

### Fully Extended Outriggers

- Working Range Diagram (16,000 lbs. Counterweight)
- 38 to 63.5 ft. (11.58 – 19.39 m) main boom capacities, **A-max** mode
- 38 to 115 ft. (11.58 – 35.05 m) main boom capacities, Basic Mode "B"
- 36.5 (11.13 m) ft. offset fly capacities, Basic Mode "B"
- 36.5 to 61 ft. (11.13 – 18.59 m) two-piece offset fly capacities, Basic mode "B"



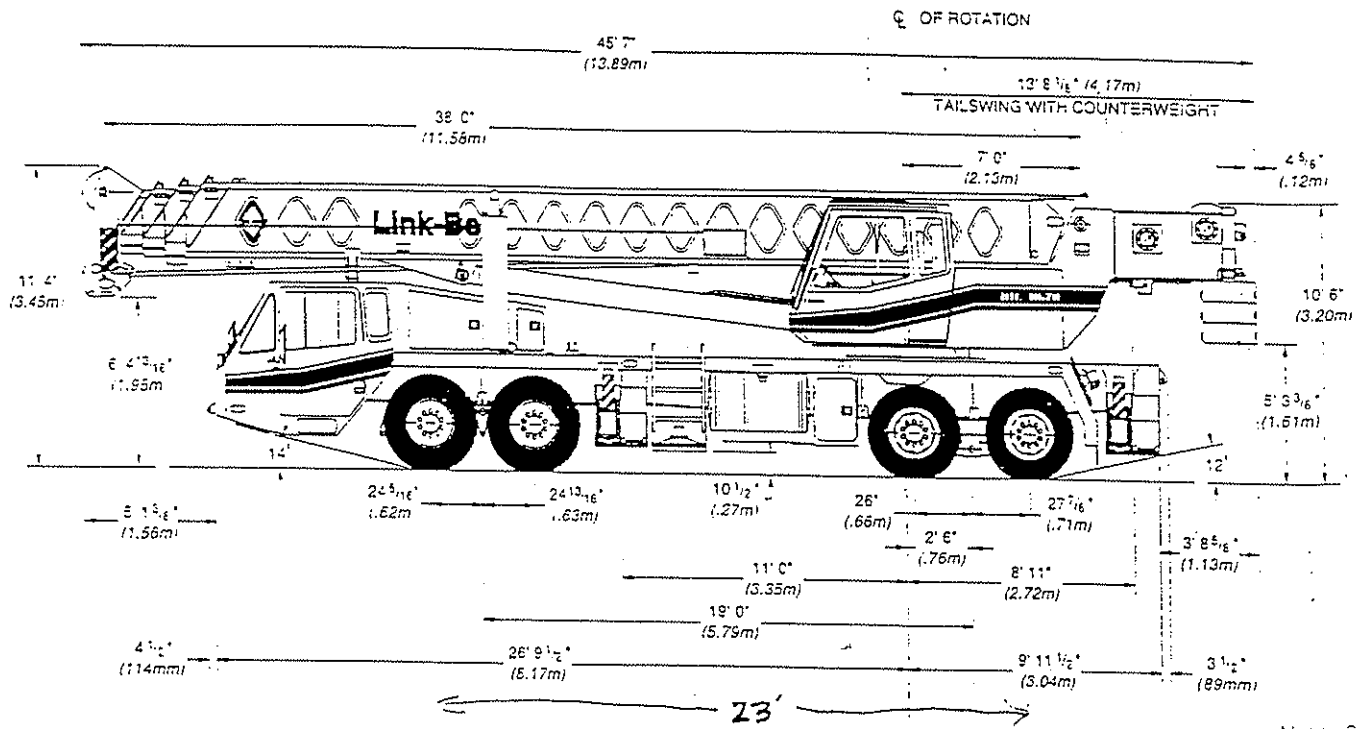
**CAUTION:** This material is supplied for reference use only. Operator must refer to in-cab Crane Rating Manual to determine allowable machine lifting capacities and operating procedures.

# Specifications

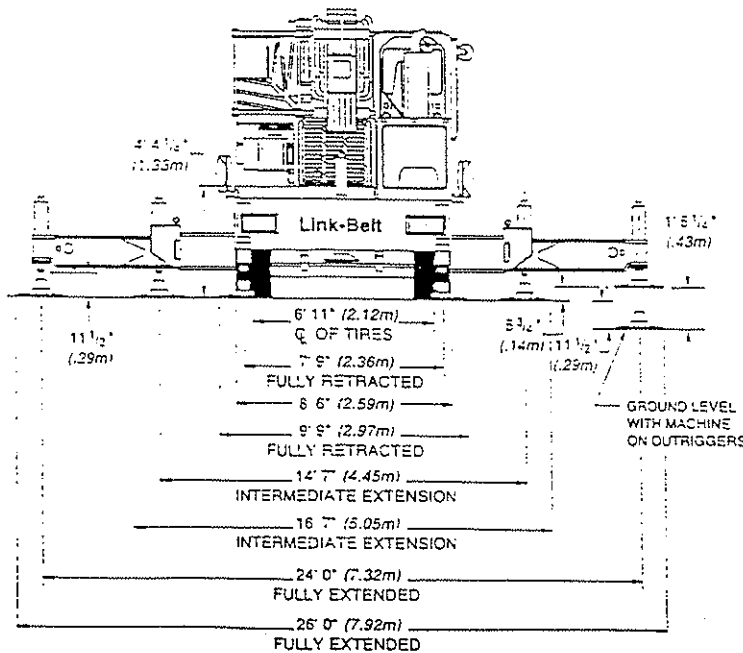
Hydraulic Truck Crane

## HTC-8670

70-ton (63.5 metric ton)



Not to Scale



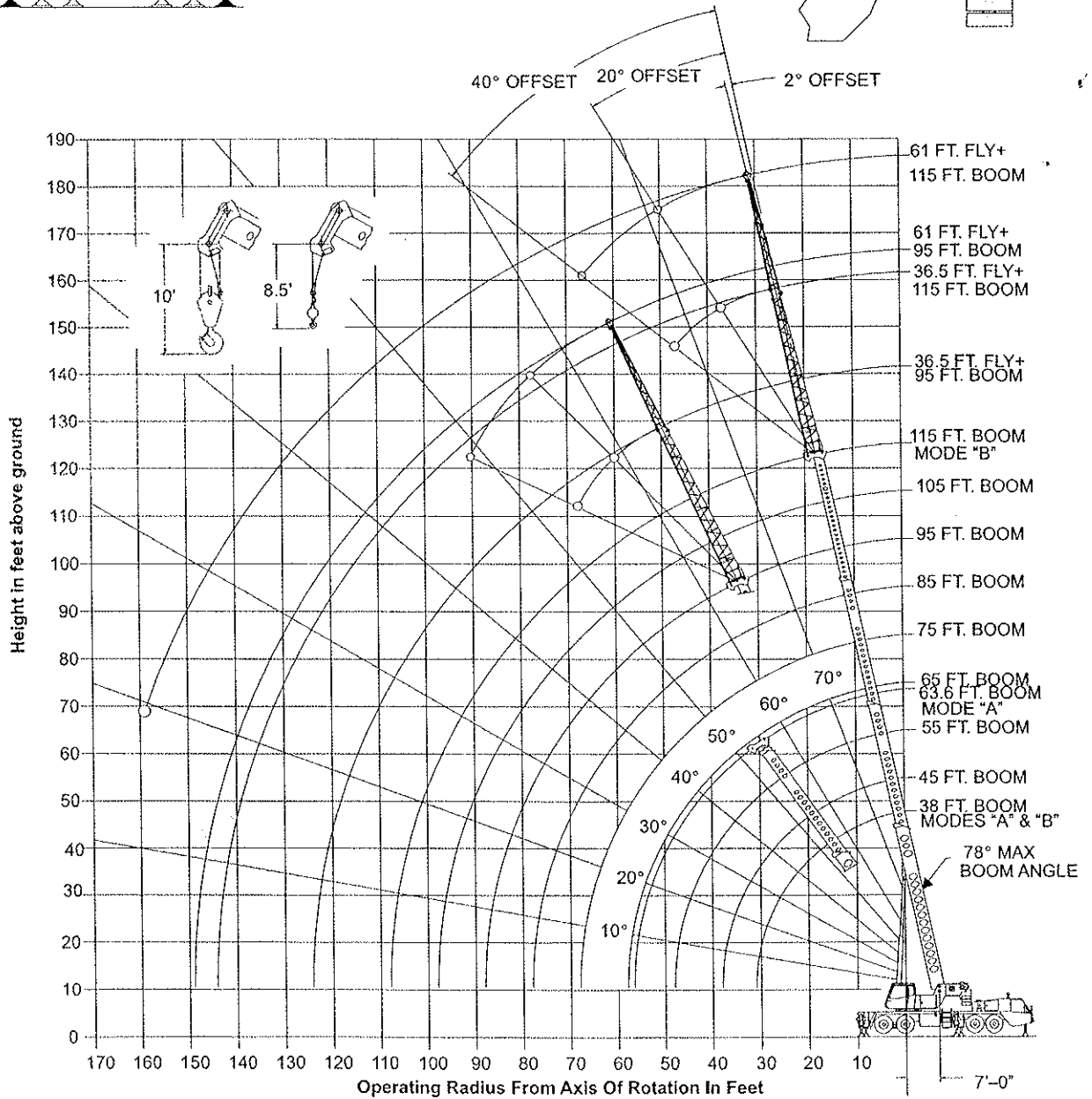
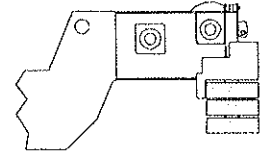
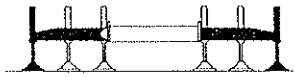
Not to Scale

General Dimensions	feet	meter
Turning radius (centerline to centerline of tires)	51' 0"	15.54
Turning radius (curb to curb)	51' 9"	15.77
Turning radius (wall to wall)	55' 6"	16.92
Ground clearance	10-5' 16"	.26
Tailswing	13' 9"	4.19

# WORKING RANGE DIAGRAM

Working Range Diagram  
On Fully Extended Outriggers

16,000# Counterweight



○ Denotes Main Boom + 61' Fly--Boom Mode "B"

⊙ OF ROTATION

Note: Boom and fly geometry shown are for unloaded condition and crane standing level on firm supporting surface. Boom deflection, subsequent radius, and boom angle change must be accounted for when applying load to hook.

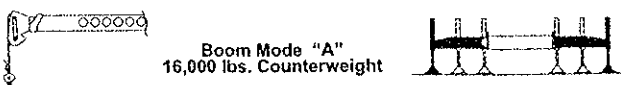


## WARNING

Do Not Lower The Boom Below The Minimum Boom Angle For No Load As Shown In The Lift Charts For The Boom Lengths Given. Loss Of Stability Will Occur Causing A Tipping Condition.

Note: Refer To Page 4 For "Capacity Deductions" Caused By Auxiliary Load Handling Equipment.

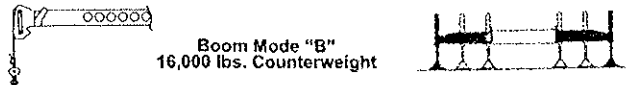
**Boom Mode "A"**  
16,000 lbs. Counterweight



Rated Lifting Capacities In Pounds On Fully Extended Outriggers See Set Up Note 2.

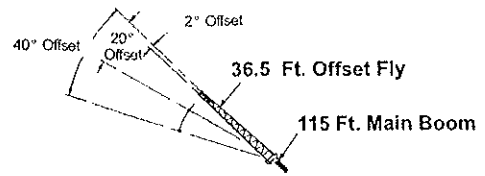
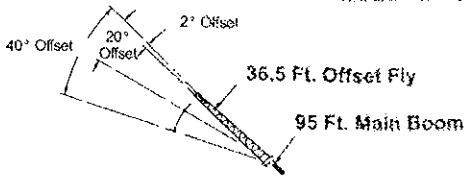
Load Radius (ft)	Loaded Boom Angle (Deg.)	38 Ft.		45 Ft.		
		360°	Over Rear	Loaded Boom Angle (Deg.)	360°	Over Rear
9	69.0	140,000	140,000			
10	67.0	132,000	132,000	71.0	87,400	87,400
12	64.0	116,900	116,900	68.5	87,400	87,400
15	58.5	100,200	100,200	64.0	87,400	87,400
20	48.5	75,900	75,900	56.5	75,500	75,500
25	36.5	58,700	58,700	48.0	58,300	58,300
30	17.5	45,400	45,400	38.0	45,100	45,100
35				24.5	34,500	34,500
Min.Bm. Ang./Cap.	0 (31.0)	25,200	25,200	0 (38.0)	20,200	20,200
Load Radius (ft)	Loaded Boom Angle (Deg.)	55 Ft.		60.3 Ft.		
		360°	Over Rear	Loaded Boom Angle (Deg.)	360°	Over Rear
10	75.0	85,600	85,600			
12	73.0	85,600	85,600	75.5	56,300	56,300
15	69.5	85,600	85,600	73.0	56,300	56,300
20	64.0	75,000	75,000	68.0	53,000	53,000
25	57.5	57,900	57,900	63.0	44,900	44,900
30	51.0	44,400	44,400	57.5	38,700	38,700
35	43.0	34,100	34,100	51.5	33,700	33,700
40	34.5	27,000	27,000	45.5	26,700	26,700
45	22.0	21,800	21,800	38.0	21,600	21,600
50				29.0	17,700	17,700
55				16.0	14,600	14,600
Min.Bm. Ang./Cap.	0 (48.0)	14,100	14,100	0 (56.6)	10,400	10,400

**Boom Mode "B"**  
16,000 lbs. Counterweight



Rated Lifting Capacities In Pounds On Fully Extended Outriggers See Set Up Note 2.

Load Radius (ft)	Loaded Boom Angle (Deg.)	35.5 Ft.		45 Ft.			55 Ft.		
		360°	Over Rear	Loaded Boom Angle (Deg.)	360°	Over Rear	Loaded Boom Angle (Deg.)	360°	Over Rear
9	69.0	140,000	140,000						
10	67.0	132,000	132,000	71.0	42,000	42,000	74.5	42,000	42,000
12	64.0	116,900	116,900	68.0	42,000	42,000	72.5	42,000	42,000
15	58.5	100,200	100,200	64.0	42,000	42,000	69.0	42,000	42,000
20	48.5	75,900	75,900	56.5	42,000	42,000	63.5	42,000	42,000
25	36.5	58,700	58,700	48.0	42,000	42,000	57.5	42,000	42,000
30	17.5	45,400	45,400	38.0	42,000	42,000	50.5	42,000	42,000
35				24.5	35,600	35,600	43.0	36,300	36,300
40							34.0	29,100	29,100
45							22.0	23,800	23,800
Min.Bm. Ang./Cap.	0 (31.0)	25,200	25,200	0 (38.0)	19,200	19,200	0 (48.0)	13,700	13,700
Load Radius (ft)	Loaded Boom Angle (Deg.)	65 Ft.		75 Ft.			85 Ft.		
		360°	Over Rear	Loaded Boom Angle (Deg.)	360°	Over Rear	Loaded Boom Angle (Deg.)	360°	Over Rear
12	75.5	42,000	42,000						
15	73.0	42,000	42,000	75.5	42,000	42,000	77.5	42,000	42,000
20	68.0	42,000	42,000	71.5	42,000	42,000	74.5	42,000	42,000
25	63.5	42,000	42,000	68.0	42,000	42,000	71.0	41,800	41,800
30	58.0	42,000	42,000	63.5	42,000	42,000	67.0	36,900	36,900
35	52.5	36,600	36,600	59.0	36,800	36,800	63.5	32,900	32,900
40	46.5	29,400	29,400	54.0	29,600	29,600	59.5	29,700	29,700
45	39.5	24,300	24,300	49.0	24,500	24,500	55.0	24,600	24,600
50	31.5	20,300	20,300	43.0	20,600	20,600	50.5	20,700	20,700
55	20.0	17,200	17,200	37.0	17,500	17,500	46.0	17,600	17,600
60				29.5	15,000	15,000	40.5	15,100	15,100
65				19.0	12,900	12,900	34.5	13,100	13,100
70							27.5	11,400	11,400
75							18.0	9,900	9,900
Min.Bm. Ang./Cap.	0 (58.0)	10,100	10,100	0 (68.0)	7,600	7,600	0 (78.0)	5,700	5,700
Load Radius (ft)	Loaded Boom Angle (Deg.)	95 Ft.		105 Ft.			115 Ft.		
		360°	Over Rear	Loaded Boom Angle (Deg.)	360°	Over Rear	Loaded Boom Angle (Deg.)	360°	Over Rear
20	76.5	38,600	38,600						
25	73.5	33,800	33,800	75.5	30,300	30,300	77.0	24,500	24,500
30	70.0	29,800	29,800	72.5	27,000	27,000	74.5	24,500	24,500
35	67.0	26,600	26,600	69.5	24,100	24,100	72.0	22,200	22,200
40	63.5	23,900	23,900	66.5	21,700	21,700	69.5	20,000	20,000
45	60.0	21,700	21,700	63.5	19,600	19,600	66.5	18,100	18,100
50	56.0	19,800	19,800	60.5	17,900	17,900	63.5	16,300	16,300
55	52.5	17,700	17,700	57.0	16,200	16,200	61.0	14,900	14,900
60	48.0	15,200	15,200	53.5	14,900	14,900	58.0	13,600	13,600
65	43.5	13,200	13,200	50.0	13,300	13,300	54.5	12,500	12,500
70	38.5	11,600	11,600	46.0	11,600	11,600	51.5	11,600	11,600
75	33.0	10,100	10,100	41.5	10,200	10,200	48.0	10,300	10,300
80	26.5	8,800	8,800	37.0	8,900	8,900	44.0	9,000	9,000
85	17.0	7,700	7,700	31.5	7,800	7,900	40.0	7,800	7,900
90				25.5	6,800	6,900	35.5	6,900	7,000
95				16.5	5,900	6,000	30.5	6,000	6,100
100							24.5	5,200	5,400
105							16.0	4,600	4,700
Min.Bm. Ang./Cap.	0 (88.0)	4,300	4,300	0 (98.0)	3,100	3,100	0 (108.0)	2,200	2,200



**Boom Mode "B"**  
16,000 lbs. Counterweight

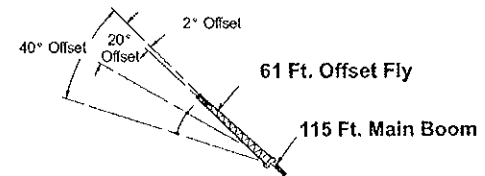
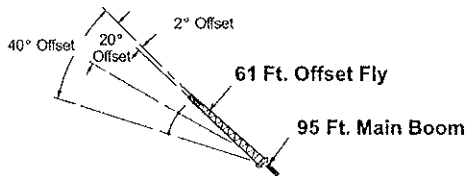
Rated Lifting Capacities in Pounds On Fully Extended Outriggers See Set Up Note 2.

Load Radius (ft)	2° Offset		20° Offset		40° Offset	
	Loaded Boom Angle (Deg.)	360°	Loaded Boom Angle (Deg.)	360°	Loaded Boom Angle (Deg.)	360°
30	76.5	16,900				
35	74.0	14,400				
40	72.0	13,700	76.5	10,200		
45	69.5	13,100	74.5	9,600		
50	67.5	12,400	72.0	9,100	76.5	6,800
55	65.0	11,800	69.5	8,700	74.0	6,800
60	62.5	11,200	67.0	8,300	71.5	6,600
65	60.0	10,500	64.5	7,900	68.5	6,400
70	57.5	9,800	62.0	7,600	66.0	6,300
75	55.0	9,300	59.5	7,300	63.0	6,100
80	52.0	8,700	56.5	7,000	60.0	6,000
85	49.0	8,300	53.5	6,700	57.0	5,900
90	46.0	7,800	50.5	6,500	53.5	5,800
95	42.5	7,200	47.0	6,300	50.0	5,700
100	39.0	6,500	43.5	6,100	46.0	5,700
105	35.0	5,800	39.5	6,000	41.5	5,700
110	30.5	5,100	35.0	5,400		
115	25.0	4,600	29.5	4,800		
120	18.5	4,100	22.0	4,200		
Min. Bm. Ang./Cap.	0	1,600	0	1,700	0	1,900

**Boom Mode "B"**  
16,000 lbs. Counterweight

Rated Lifting Capacities in Pounds On Fully Extended Outriggers See Set Up Note 2.

Load Radius (ft)	2° Offset		20° Offset		40° Offset	
	Loaded Boom Angle (Deg.)	360°	Loaded Boom Angle (Deg.)	360°	Loaded Boom Angle (Deg.)	360°
35	76.5	10,500				
40	75.0	10,500				
45	73.0	10,500	77.5	9,200		
50	71.5	10,500	75.5	8,900		
55	69.5	10,500	73.5	8,600	77.5	6,800
60	68.0	10,500	71.5	8,200	75.0	6,800
65	66.0	10,200	69.5	8,000	73.0	6,500
70	63.5	9,500	67.5	7,700	71.0	6,300
75	61.5	8,700	65.5	7,400	68.5	6,200
80	59.0	8,000	63.5	7,200	66.5	6,100
85	57.0	7,400	61.0	7,000	64.0	6,000
90	54.5	6,900	58.5	6,800	61.5	5,900
95	52.0	6,400	56.0	6,500	59.0	5,800
100	49.0	5,900	53.5	6,100	56.5	5,700
105	46.5	5,500	50.5	5,600	53.5	5,700
110	43.5	4,900	48.0	5,200	50.5	5,400
115	40.5	4,300	44.5	4,700	47.0	4,900
120	37.0	3,800	41.0	4,100	43.0	4,300
125	33.0	3,300	37.0	3,600		
130	29.0	2,900	32.5	3,100		
135	24.0	2,500	27.5	2,700		
140	17.5	2,200	20.5	2,300		
Min. Bm. Ang./Cap.	0	400	0	400	0	500



**Boom Mode "B"**  
16,000 lbs. Counterweight

Rated Lifting Capacities in Pounds On Fully Extended Outriggers See Set Up Note 2.

Load Radius (ft)	2° Offset		20° Offset		40° Offset	
	Loaded Boom Angle (Deg.)	360°	Loaded Boom Angle (Deg.)	360°	Loaded Boom Angle (Deg.)	360°
35	77.5	9,500				
40	75.5	9,100				
45	74.0	8,500				
50	72.0	7,900				
55	70.0	7,400	77.0	5,200		
60	68.0	6,900	75.0	4,900		
65	66.0	6,400	73.0	4,600		
70	64.0	6,000	71.0	4,400	77.5	3,400
75	62.0	5,600	69.0	4,200	75.0	3,300
80	60.0	5,300	66.5	4,000	73.0	3,200
85	57.5	5,000	64.5	3,900	70.5	3,100
90	55.5	4,700	62.5	3,700	68.0	3,100
95	53.0	4,500	60.0	3,600	65.5	3,000
100	50.5	4,200	57.5	3,400	63.0	2,900
105	48.0	4,000	55.0	3,300	60.0	2,900
110	45.5	3,800	52.0	3,200	57.5	2,800
115	43.0	3,600	49.5	3,100	54.0	2,800
120	40.0	3,500	46.5	3,000	50.5	2,800
125	36.5	3,300	43.0	2,900	47.0	2,800
130	33.0	3,200	39.5	2,900	42.5	2,800
135	29.0	3,100	35.0	2,800		
140	24.5	3,000	30.0	2,800		
145	18.0	2,700	22.5	2,800		
Min. Bm. Ang./Cap.	0	700	0	800	0	1,000

**Boom Mode "B"**  
16,000 lbs. Counterweight

Rated Lifting Capacities in Pounds On Fully Extended Outriggers See Set Up Note 2.

Load Radius (ft)	2° Offset		20° Offset		40° Offset	
	Loaded Boom Angle (Deg.)	360°	Loaded Boom Angle (Deg.)	360°	Loaded Boom Angle (Deg.)	360°
40	77.5	7,100				
45	76.5	7,100				
50	75.0	7,100				
55	73.5	7,000				
60	72.0	6,700	78.0	4,900		
65	70.0	6,400	76.0	4,700		
70	68.5	6,200	74.5	4,500		
75	67.0	5,900	73.0	4,300		
80	65.0	5,600	71.0	4,200	76.5	3,300
85	63.5	5,300	69.0	4,000	74.5	3,200
90	61.5	5,100	67.5	3,900	72.5	3,100
95	59.5	4,800	65.5	3,700	70.5	3,000
100	57.5	4,600	63.5	3,600	68.5	3,000
105	55.5	4,400	61.5	3,500	66.5	2,900
110	53.5	4,200	59.5	3,400	64.0	2,900
115	51.5	4,000	57.0	3,300	62.0	2,800
120	49.0	3,800	55.0	3,200	59.5	2,800
125	46.5	3,400	52.5	3,100	57.0	2,800
130	44.0	3,100	50.0	3,000	54.0	2,700
135	41.5	2,900	47.5	2,900	51.0	2,700
140	38.5	2,600	44.5	2,800	48.0	2,700
145	35.5	2,300	41.5	2,500	44.0	2,700
150	32.0	2,000	38.0	2,300		
155	28.0	1,700	33.5	2,000		
160	23.5	1,400	28.5	1,600		

**WARNING**  
Do Not Lower 61 Ft. Offset Fly In Working Position Below 20 Degrees Unless Main Boom Length is 108 Ft. Or Less, Since Loss Of Stability Will Occur Causing A Tipping Condition.