



Crane Division

GROVE GMK6350 All Terrain Crane

 **EDWARDS**
Inc.

www.edwardsinc.com

Edwards Inc. Crane Division

Edwards hydraulic crane service is noted as being the largest in North Carolina. With our various locations, we regularly serve our market with 24 hour availability. Our vast fleet of crane rentals range from 7.5 tons to our flagship 600 ton crane. Our cranes are dispatched from a state-of-the-art computerized communication center that enables us to achieve quicker response times to our customer's requests.

Edwards utilizes the Cranimation and 3D Lift Planning systems to specifically plan and simulate critical lifts before mobilization, and our dispatch center assists in developing your crane requirements. These services ensure the timeliness and efficiency of your resources.

We have the resources and the manpower to specialize in maintenance shutdowns, plant installations and equipment removal. Our crane operators are certified by the National Commission for the Certification of Crane Operators (CCO).

Safety is our First Concern

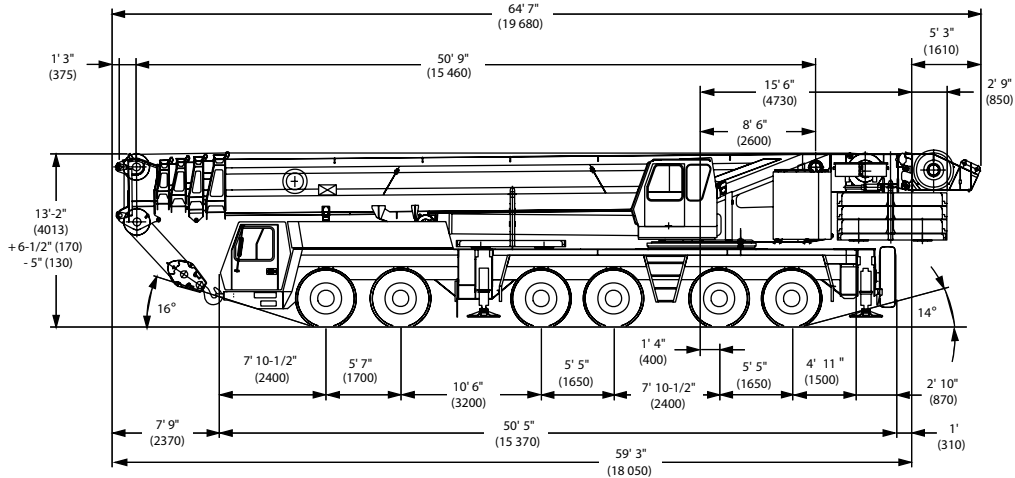
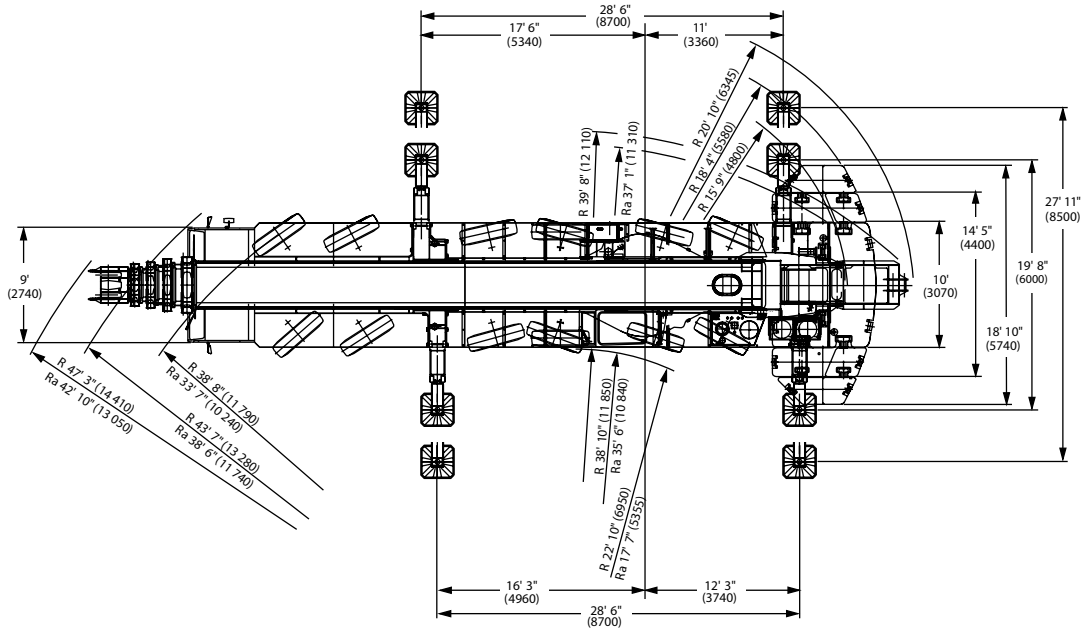
Edwards is committed to the safety and health of our employees and customers. Knowing that our clients value the same type of work environment, Edwards utilizes both a full time safety staff as well as the services of several independent professional safety consultants.

Edwards also makes use of the consultative and technical assistance services provide by the Department of Labor - OSHA Division. All employees are pre-drug screened, given safety orientations and extensive training. We understand that part of the quality in our work is the customer's confidence that we perform our projects safely.

You are welcome to review our safety program and to experience the safe atmosphere for yourself. Please do not hesitate to contact the Safety Department if you have any questions or concerns.



DIMENSIONS



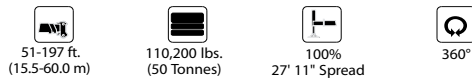
Note: () Reference dimensions in mm

BASIC WEIGHTS (LBS.)	Axles 1 & 2	Axles 3 - 6	Total
Mercedes Power, 12x6, 20.5 R25 Tires,			
2nd Hydraulic Oil Cooler, Brackets for swingaway	50,781	107,969	158,750
Additions:			
12 x 8 x 12 in lieu	965	-(105)	860
Outrigger Pads	-	772	772
Removable rear outrigger box option	-(1,225)	3,430	2,205
Auxiliary Hoist	-(5,365)	11,450	6,085
Swingaway	6,860	-(1,525)	5,335
Spare Wheel 20.5 with stowage	-(590)	1,400	810
Spare Wheel 16.00 with stowage	-(520)	1,240	720
Spare Wheel 14.00 with stowage	-(425)	1,010	585
Fixed MEGALIFT brackets w/o winch	653 lbs.	-123 lbs.	530 lbs.
Fixed bracket for MEGALIFT winch	119 lbs.	212 lbs.	331 lbs.
Bolted parts for MEGALIFT	119 lbs.	212 lbs.	331 lbs.
MEGALIFT winch	6,257 lbs.	5,736 lbs.	11,993 lbs.
Removal:			
Front Outrigger Beams & Jacks	-(3,380)	-(1,980)	-(5,360)
Rear Outrigger Beams & Jacks	3,730	-(9,650)	-(5,920)
Outrigger Box (must add weight above for option)	6,750	-(17,550)	-(10,800)
Boom Assembly (minus lift cylinder)	-(34,750)	-(23,175)	-(57,925)
Telescope Sections 1-4	-(27,900)	-(15,860)	-(43,760)
Lift Cylinder	-(2,250)	-(3,400)	-(5,650)
16.00 R25 Tires in lieu	-(370)	-(740)	-(1,110)
14.00 R25 Tires in lieu	-(900)	-(1,800)	-(2,700)

LOAD CHARTS



Feet	142	160	178	197
20	139.0			
25	139.0	106.0		
30	139.0	106.0	78.0	66.0
35	139.0	106.0	78.0	66.0
40	139.0	106.0	78.0	66.0
45	139.0	106.0	78.0	66.0
50	126.0	106.0	78.0	66.0
55	112.0	106.0	78.0	66.0
60	100.0	101.0	78.0	66.0
65	91.0	91.0	78.0	66.0
70	82.0	83.0	78.0	66.0
75	75.0	77.0	76.0	66.0
80	71.0	71.0	70.0	66.0
85	66.0	66.0	64.0	65.0
90	63.0	62.0	59.0	60.0
95	59.0	58.0	56.0	56.0
100	55.0	54.0	53.0	52.0
105	51.0	50.0	49.0	48.0
110	47.0	47.0	46.0	44.0
115	44.0	43.4	42.6	41.2
120	41.4	40.6	39.8	38.4
125		38.0	37.0	35.8
130		35.6	34.6	33.4
135		33.4	32.4	31.0
140		31.2	30.4	29.0
145			28.4	27.0
150			26.6	25.2
155			25.0	23.6
160			23.4	22.0
165				20.6
170				19.2
175				17.8
180				14.4

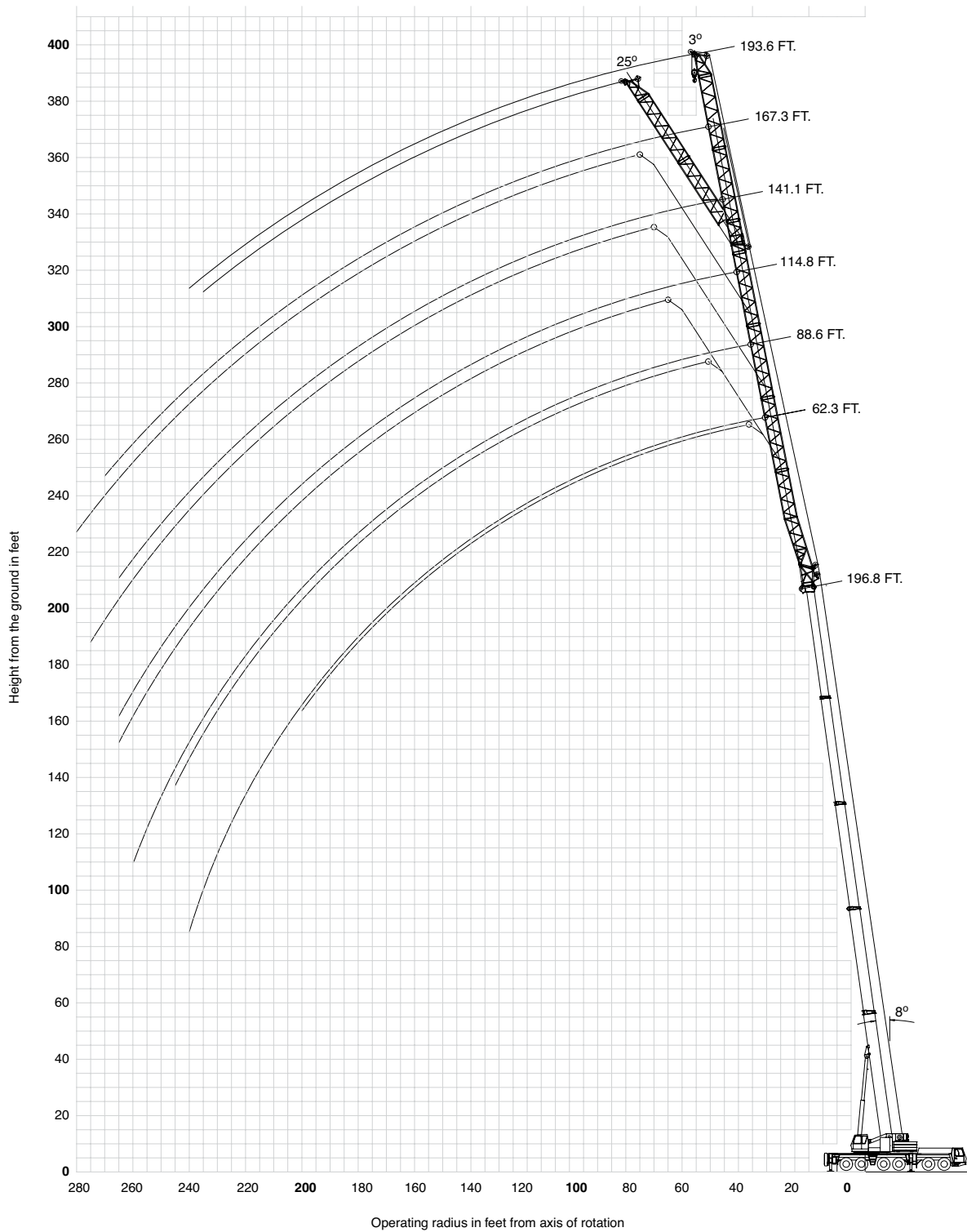


Feet	142	160	178	197
20	139.0			
25	139.0	106.0		
30	139.0	106.0	78.0	66.0
35	139.0	106.0	78.0	66.0
40	122.0	106.0	78.0	66.0
45	105.0	101.0	78.0	66.0
50	96.0	95.0	78.0	66.0
55	89.0	85.0	76.0	66.0
60	78.0	75.0	72.0	66.0
65	69.0	67.0	64.0	60.0
70	61.0	60.0	57.0	54.0
75	54.0	54.0	52.0	48.0
80	49.0	48.0	47.0	43.6
85	43.6	42.8	41.8	39.4
90	39.4	38.6	37.4	35.6
95	35.4	34.6	33.6	32.0
100	32.0	31.2	30.2	28.6
105	29.0	28.2	27.2	25.6
110	26.2	25.4	24.4	23.0
115	23.8	23.0	22.0	20.4
120	21.6	20.8	19.8	18.2
125		18.8	17.8	16.2
130		16.8	15.8	14.4
135		15.2	14.2	12.6
140		13.6	12.6	11.0
145			11.2	9.6
150			9.8	8.2
155			8.6	7.0
160			7.4	5.8
165				4.8
170				3.8

THIS CHART IS ONLY A GUIDE AND SHOULD NOT BE USED TO OPERATE THE CRANE.
The individual crane's load chart, operating instructions and other instructional plates must be read and understood prior to operating the crane.

WORKING RANGE

51'-197' main boom



THIS CHART IS ONLY A GUIDE AND SHOULD NOT BE USED TO OPERATE THE CRANE.
The individual crane's load chart, operating instructions and other instructional plates must be read and understood prior to operating the crane.

LOAD CHARTS

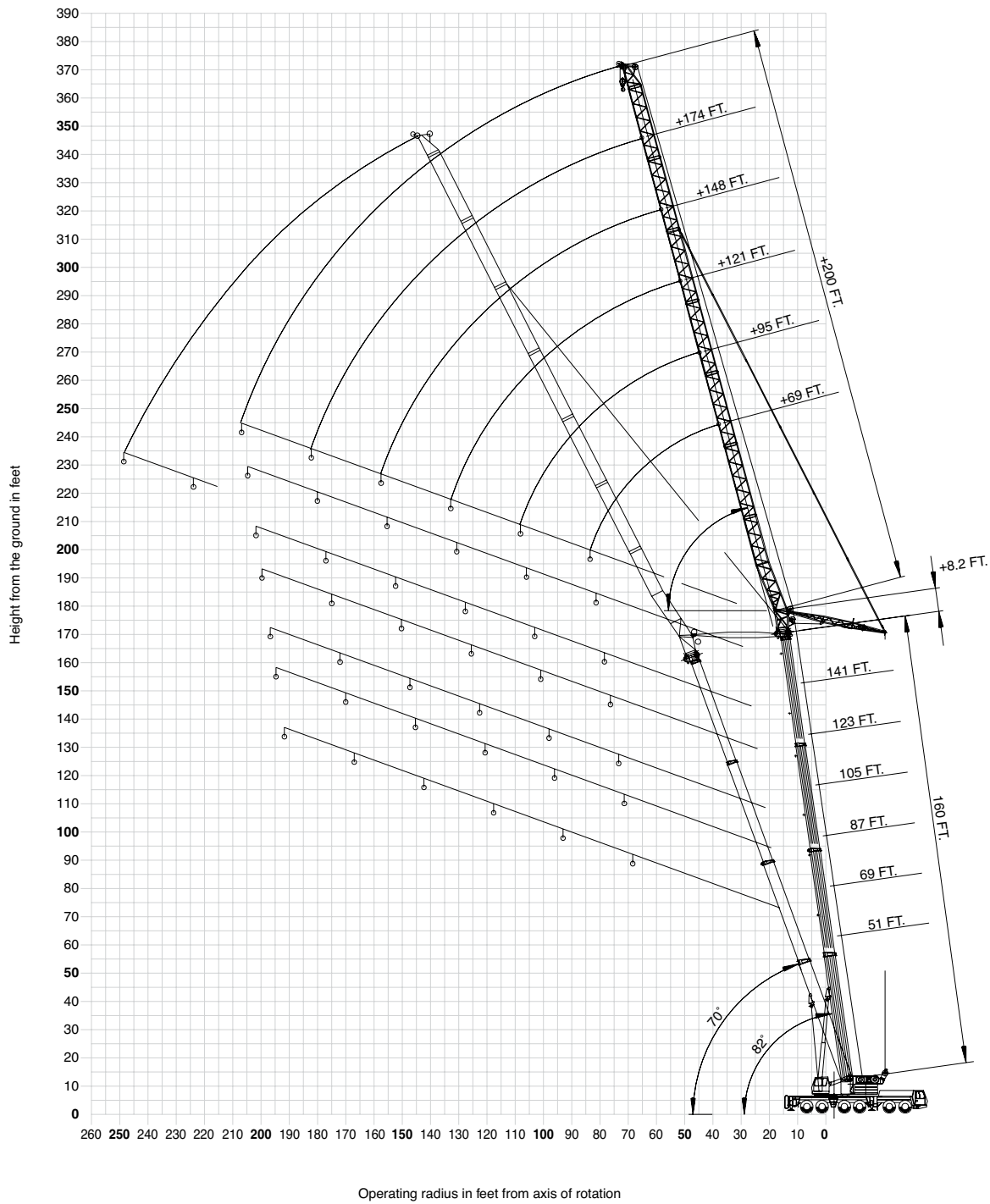
		62 FT		89 FT		115 FT		141 FT		167 FT		194 FT
		3°	25°	3°	25°	3°	25°	3°	25°	3°	25°	3°
Feet												
35												
40												
45												
50	29.2											
55	29.2	28.6	21.2									
60	29.2	28.6	21.2			16.4						
65	29.2	28.6	21.2			16.4						
70	29.2	28.6	21.2			16.4						
75	29.2	28.6	21.2	20.6	16.4	16.4		11.6				
80	29.2	28.6	21.2	20.6	16.4	16.4		11.6		9.2		
85	29.2	28.6	21.2	20.6	16.4	16.4		11.6		9.2		4.8
90	29.2	28.6	21.2	20.6	16.4	16.4		11.6		9.2		4.8
95	28.6	27.8	21.2	20.6	16.4	16.2	11.6			9.2		4.8
100	27.6	26.8	21.2	20.2	16.4	16.2	11.6			9.2		4.8
105	26.4	25.4	20.8	19.6	16.4	16.2	11.6	12.2		9.2		4.8
110	25.4	23.8	20.2	19.0	16.4	15.6	11.6	12.2		9.2		4.8
115	24.2	22.8	19.6	18.4	16.2	15.2	11.6	12.2		9.2	9.4	4.8
120	23.0	22.0	19.0	17.8	15.6	14.6	11.6	12.2		9.2	9.4	4.8
125	21.8	21.2	18.2	17.4	15.2	14.2	11.6	12.0		9.2	9.4	4.8
130	20.6	20.4	17.6	16.8	14.6	13.8	11.6	11.6		9.2	9.2	4.8
135	19.8	19.8	17.0	16.4	14.2	13.2	11.6	11.2		9.0	9.0	4.8
140	19.2	19.2	16.4	15.8	13.8	12.8	11.2	10.8		8.8	8.8	4.8
145	18.6	18.6	16.0	15.4	13.2	12.6	11.0	10.6		8.6	8.6	4.8
150	18.0	17.8	15.4	15.0	12.8	12.2	10.6	10.2		8.4	8.2	4.8
155	17.2	17.2	14.8	14.6	12.4	11.8	10.2	9.8		8.0	8.0	4.8
160	16.6	16.6	14.2	14.2	12.0	11.4	9.8	9.6		7.8	7.8	4.8
165	16.0	16.0	13.8	13.6	11.6	11.0	9.4	9.2		7.6	7.6	4.8
170	15.2	15.2	13.4	13.2	11.2	10.8	9.0	8.8		7.2	7.4	4.8
175	14.6	14.6	12.8	12.6	10.8	10.4	8.8	8.6		7.0	7.0	4.6
180	13.8	14.0	12.4	12.4	10.4	10.2	8.4	8.4		6.8	6.8	4.4
185	13.2	13.4	12.0	12.0	10.2	9.8	8.2	8.0		6.4	6.6	4.2
190	12.6	12.6	11.6	11.6	9.8	9.6	7.8	7.8		6.2	6.2	4.2
195	11.8	12.0	11.0	11.2	9.4	9.2	7.6	7.4		5.8	6.0	4.0
200	10.8	11.2	10.6	10.8	9.2	9.0	7.2	7.2		5.6	5.8	3.8
205	9.8	10.2	10.2	10.4	8.8	8.8	7.0	7.0		5.4	5.6	3.6
210	9.0	9.2	9.6	10.0	8.4	8.4	6.8	6.8		5.2	5.4	3.4
215	8.0	8.2	9.2	9.4	8.2	8.2	6.6	6.6		5.0	5.2	3.2
220	7.2	7.4	8.4	9.0	7.8	8.0	6.4	6.4		4.8	4.8	3.0
225	6.4		7.6	8.4	7.6	7.6	6.0	6.2		4.6	4.6	2.8
230	5.6		6.8	7.4	7.2	7.4	5.8	5.8		4.4	4.4	2.6
235	4.8		6.0	6.6	6.6	7.0	5.6	5.6		4.2	4.2	
240	3.8		5.2	5.8	6.0	6.8	5.4	5.4		4.0	4.2	
245			4.6	5.0	5.2	6.4	5.2	5.2		3.8	4.0	
250			4.0		4.6	5.6	4.8	5.0		3.6	3.8	
255			3.2		4.0	5.0	4.2	4.8		3.4	3.6	
260			2.6		3.4	4.2	3.6	4.6		3.2	3.4	
265					2.8	3.6	3.0	4.2		3.0	3.2	
270								3.6		2.6	3.0	
275								2.8			2.8	
280											2.6	

		62 FT		89 FT		115 FT		141 FT		167 FT		194 FT
		3°	25°	3°	25°	3°	25°	3°	25°	3°	25°	3°
Feet												
35												
40												
45												
50	29.2											
55	29.2	28.6	21.2									
60	29.2	28.6	21.2			16.4						
65	29.2	28.6	21.2			16.4						
70	29.2	28.6	21.2			16.4						
75	29.2	28.6	21.2	20.6	16.4	16.4		11.6				
80	29.2	28.6	21.2	20.6	16.4	16.4		11.6		9.2		
85	29.2	28.6	21.2	20.6	16.4	16.4		11.6		9.2		4.8
90	29.2	28.6	21.2	20.6	16.4	16.4		11.6		9.2		4.8
95	27.8	27.8	21.2	20.6	16.4	16.2	11.6			9.2		4.8
100	25.0	26.4	21.2	20.2	16.4	16.2	11.6			9.2		4.8
105	22.6	23.8	20.8	19.6	16.4	16.2	11.6	12.2		9.2		4.8
110	20.2	21.4	20.2	19.0	16.4	15.6	11.6	12.2		9.2		4.8
115	18.0	19.2	19.0	18.4	16.2	15.2	11.6	12.2		9.2	9.4	4.8
120	16.0	17.2	17.2	17.8	15.6	14.6	11.6	12.2		9.2	9.4	4.8
125	14.2	15.4	15.4	17.4	15.2	14.2	11.6	12.0		9.2	9.4	4.8
130	12.6	13.6	13.8	16.4	14.0	13.8	11.6	11.6		9.2	9.2	4.8
135	11.0	12.0	12.2	14.6	12.4	13.2	11.6	11.2		9.0	9.0	4.8
140	9.6	10.4	10.8	13.0	11.0	12.8	11.0	10.8		8.8	8.8	4.8
145	8.2	9.0	9.4	11.6	9.8	12.6	9.8	10.6		8.6	8.6	4.8
150	7.0	7.8	8.2	10.2	8.4	12.0	8.4	10.2		8.4	8.2	4.8
155	5.8	6.4	7.0	9.0	7.4	10.6	7.4	9.8		7.2	8.0	4.8
160	4.6	5.2	5.8	7.6	6.2	9.4	6.2	9.4		6.0	7.8	4.8
165	3.6	4.2	4.8	6.6	5.2	8.2	5.2	8.2		5.0	7.6	4.4
170		3.2	3.8	5.4	4.2	7.0	4.2	7.2		4.2	7.0	3.6
175			2.8	4.4	3.2	6.0	3.4	6.2		3.2	6.0	2.6
180				3.4		5.0		5.2		5.0		
185						4.0		4.2		4.2		
190						3.0		3.2		3.2		

THIS CHART IS ONLY A GUIDE AND SHOULD NOT BE USED TO OPERATE THE CRANE.
The individual crane's load chart, operating instructions and other instructional plates must be read and understood prior to operating the crane.

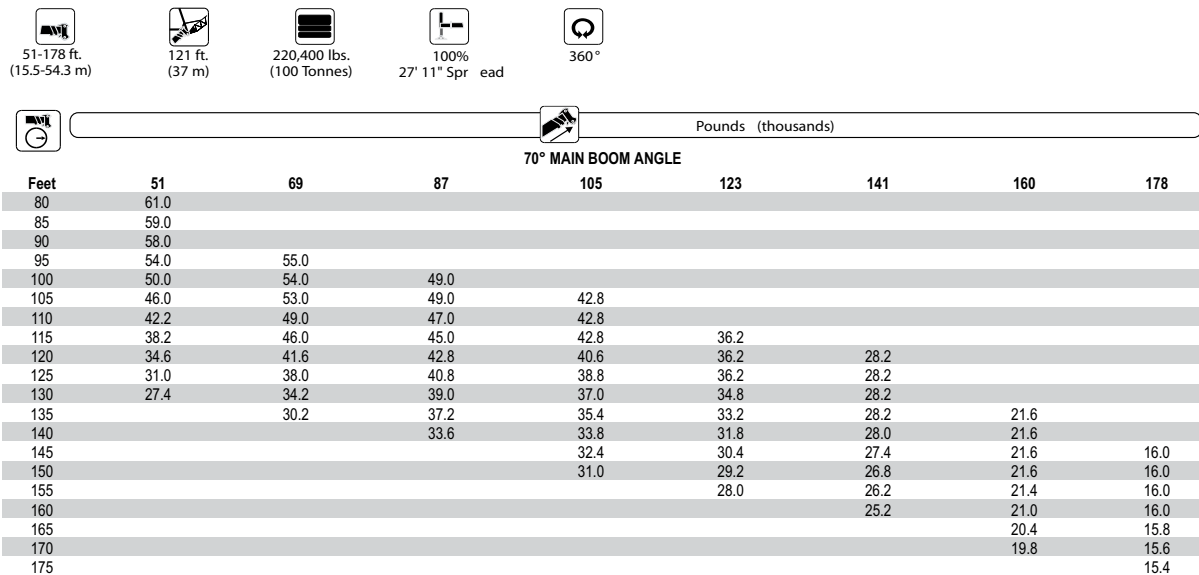
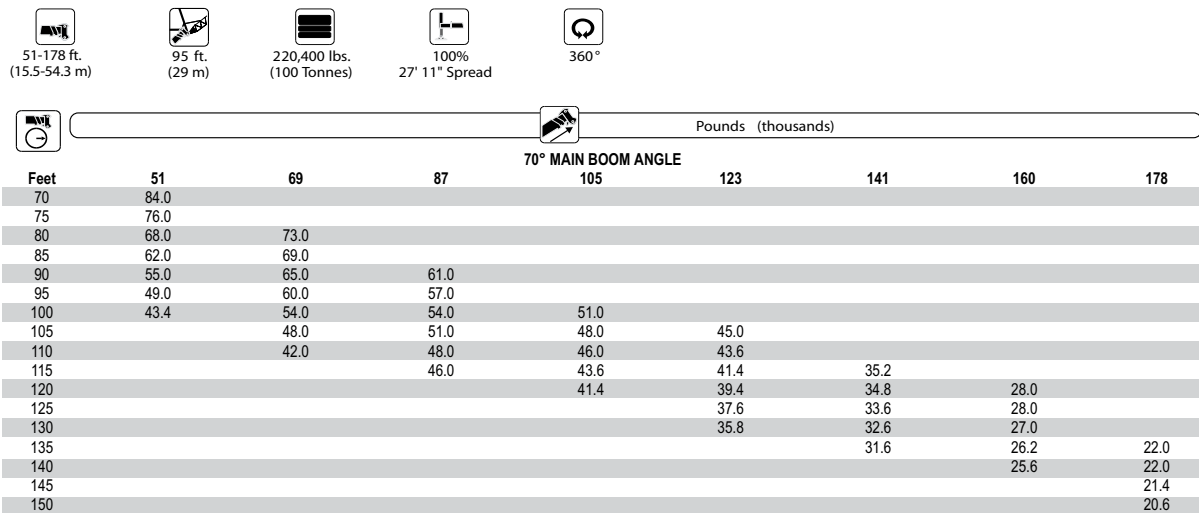
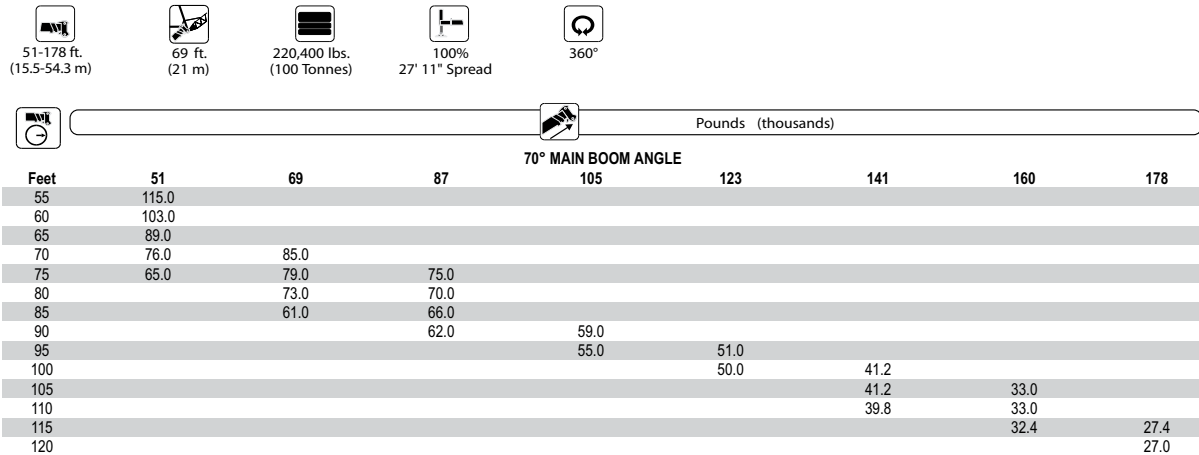
WORKING RANGE

51'-160' main boom








THIS CHART IS ONLY A GUIDE AND SHOULD NOT BE USED TO OPERATE THE CRANE.
The individual crane's load chart, operating instructions and other instructional plates must be read and understood prior to operating the crane.

LOAD CHARTS



THIS CHART IS ONLY A GUIDE AND SHOULD NOT BE USED TO OPERATE THE CRANE.
The individual crane's load chart, operating instructions and other instructional plates must be read and understood prior to operating the crane.






LOAD CHARTS

51-178 ft. (15.5-54.3 m) 148 ft. (45 m) 220,400 lbs. (100 Tonnes) 100% 360°

70° MAIN BOOM ANGLE






Feet	51	69	87	105	123	141	160	178
95	42.6							
100	42.4							
105	41.8	38.8						
110	41.2	38.6						
115	39.6	38.4	34.8					
120	37.4	38.0	34.8	30.6				
125	35.4	37.6	34.6	30.6	26.4			
130	32.8	36.2	34.4	30.6	26.4			
135	30.4	34.6	34.4	30.4	26.4			
140	27.8	32.6	33.8	30.4	26.4	20.8		
145	25.4	30.4	33.0	30.4	26.4	20.8	15.2	
150	23.2	27.8	32.0	30.2	26.4	20.8	15.2	
155	20.8	25.4	30.0	28.8	26.2	20.6	15.2	
160		23.0	27.4	27.8	25.8	20.6	15.2	10.8
165			25.0	26.6	24.8	20.6	15.2	10.8
170			22.8	25.6	23.8	20.6	15.2	10.8
175				24.6	23.0	20.6	15.2	10.8
180					22.0	20.2	15.2	10.8
185						19.4	15.2	10.8
190							15.2	10.8
195							15.2	10.8
200							15.2	10.8

51-178 ft. (15.5-54.3 m) 174 ft. (53 m) 220,400 lbs. (100 Tonnes) 100% 360°

70° MAIN BOOM ANGLE

Feet	51	69	87	105	123	141	160	178
105	29.4							
110	28.6							
115	28.0							
120	27.4	26.6						
125	26.8	25.8	24.6					
130	26.2	24.8	24.2					
135	25.2	24.2	23.6	21.6				
140	24.4	23.8	23.2	21.6	18.8			
145	23.6	23.4	22.8	21.4	18.8			
150	23.0	22.8	22.4	21.2	18.8			
155	22.4	22.4	22.0	20.8	18.6	14.6		
160	21.6	21.8	21.4	20.6	18.6	14.6	10.4	
165	20.0	21.4	21.2	20.2	18.4	14.6	10.4	
170	18.4	21.0	20.8	19.8	18.4	14.6	10.4	
175	17.0	19.8	20.4	19.6	18.2	14.6	10.4	6.6
180	15.6	18.4	19.8	19.2	17.8	14.6	10.4	6.6
185		16.8	18.8	18.8	17.8	14.6	10.4	6.6
190		15.6	17.8	18.6	17.6	14.6	10.4	6.6
195			17.0	18.4	17.4	14.6	10.4	6.6
200				18.0	17.0	14.6	10.4	6.6
205					16.8	14.4	10.4	6.6
210							10.4	6.6
215							10.4	6.6
220							10.4	6.6






51-160 ft. (15.5-48.6 m) 200 ft. (61 m) 220,400 lbs. (100 Tonnes) 100% 360°

70° MAIN BOOM ANGLE

Feet	51	69	87	105	123	141	160
120	17.2						
125	16.4						
130	15.8						
135	15.4	16.0					
140	14.8	15.4	15.8				
145	14.4	15.0	15.2	14.8			
150	14.0	14.4	14.8	14.8			
155	13.6	14.0	14.2	14.4	12.6		
160	13.0	13.6	14.0	14.0	12.6		
165	12.6	13.2	13.4	13.6	12.6	9.8	
170	12.2	12.6	13.0	13.2	12.6	9.8	
175	11.8	12.2	12.8	12.8	12.4	9.8	6.0
180	11.6	12.0	12.4	12.4	12.2	9.6	6.0
185	11.4	11.6	12.0	12.0	12.0	9.4	6.0
190	11.0	11.2	11.8	11.8	12.0	9.4	6.0
195	10.8	11.0	11.4	11.4	11.6	9.4	6.0
200	10.6	10.6	11.0	11.0	11.2	9.4	6.0
205	10.2	10.4	11.0	11.0	11.0	9.4	6.0
210		10.2	10.6	10.6	10.8	9.4	6.0
215		10.0	10.4	10.4	10.4	9.4	6.0
220			10.2	10.2	10.2	9.4	6.0
225				10.0	10.0	9.4	6.0
230					9.8	9.2	6.0
235					9.6	9.2	6.0
240						9.0	6.0

THIS CHART IS ONLY A GUIDE AND SHOULD NOT BE USED TO OPERATE THE CRANE.
 The individual crane's load chart, operating instructions and other instructional plates must be read and understood prior to operating the crane.

LOAD CHARTS












51-178 ft. (15.5-54.3 m) 69 ft. (21 m) 220,400 lbs. (100 Tonnes) 100% 360°

27' 11" Spread

Pounds (thousands)

Feet	82° MAIN BOOM ANGLE							
	51	69	87	105	123	141	160	178
30	121.0							
35	121.0	114.0						
40	119.0	114.0	99.0	84.0				
45	103.0	114.0	99.0	84.0	67.0			
50	88.0	102.0	99.0	84.0	67.0	51.0	37.8	
55	75.0	88.0	96.0	84.0	67.0	51.0	37.8	29.2
60	63.0	74.0	88.0	84.0	67.0	51.0	37.8	29.2
65	52.0	62.0	74.0	84.0	67.0	51.0	37.8	29.2
70		50.0	61.0	74.0	67.0	51.0	37.8	29.2
75					67.0	51.0	37.8	29.2
80							37.8	29.2
85							37.8	29.2












51-178 ft. (15.5-54.3 m) 95 ft. (29 m) 220,400 lbs. (100 Tonnes) 100% 360°

27' 11" Spread

Pounds (thousands)

Feet	82° MAIN BOOM ANGLE							
	51	69	87	105	123	141	160	178
40	88.0	79.0						
45	88.0	79.0						
50	88.0	78.0	69.0	60.0				
55	84.0	78.0	69.0	60.0	49.0	37.8		
60	76.0	78.0	69.0	60.0	49.0	37.8	28.6	21.6
65	67.0	75.0	69.0	60.0	49.0	37.8	28.6	21.6
70	60.0	68.0	69.0	60.0	49.0	37.8	28.6	21.6
75	54.0	60.0	65.0	60.0	49.0	37.8	28.6	21.6
80	47.0	53.0	59.0	59.0	49.0	37.8	28.6	21.6
85	41.4	47.0	53.0	59.0	49.0	37.8	28.6	21.6
90	35.4	40.8	47.0	53.0	48.0	37.8	28.6	21.6
95			40.4	47.0	46.0	37.8	28.6	21.6
100					43.6	37.8	28.6	21.6
105							28.6	21.6
110							28.6	21.6

51-178 ft. (15.5-54.3 m) 121 ft. (37 m) 220,400 lbs. (100 Tonnes) 100% 360°

27' 11" Spread

Pounds (thousands)

Feet	82° MAIN BOOM ANGLE							
	50.7	69	86.5	104.7	122.8	141.2	159.6	178.2
50	62.0	56.0						
55	62.0	56.0	50.0	43.0				
60	61.0	55.0	50.0	43.0	36.0	28.0		
65	61.0	55.0	49.0	43.0	36.0	28.0		
70	59.0	55.0	49.0	43.0	36.0	28.0	21.4	15.8
75	56.0	55.0	49.0	42.8	36.0	28.0	21.4	15.8
80	53.0	54.0	49.0	42.8	36.0	28.0	21.4	15.8
85	48.0	51.0	49.0	42.8	36.0	28.0	21.4	15.8
90	44.0	48.0	49.0	42.6	36.0	28.0	21.4	15.8
95	40.0	45.0	47.0	42.6	36.0	28.0	21.4	15.8
100	36.2	40.6	43.8	42.4	36.0	28.0	21.4	15.8
105	32.4	36.4	40.6	42.4	36.0	28.0	21.4	15.8
110	29.0	32.6	36.6	39.0	36.0	28.0	21.4	15.8
115	25.6	28.8	32.8	35.6	36.0	28.0	21.4	15.8
120			28.6	32.2	35.4	28.0	21.4	15.8
125					32.0	28.0	21.4	15.8
130					28.6	28.0	21.4	15.8
135							21.4	15.8

THIS CHART IS ONLY A GUIDE AND SHOULD NOT BE USED TO OPERATE THE CRANE.
The individual crane's load chart, operating instructions and other instructional plates must be read and understood prior to operating the crane.

LOAD CHARTS



		Pounds (thousands)							
		82° MAIN BOOM ANGLE							
Feet	51	69	87	105	123	141	160	178	
50	43.8								
55	43.8	39.6							
60	43.6	39.6	35.8	31.0					
65	43.4	39.6	35.6	31.0					
70	43.2	39.2	35.6	31.0	26.6				
75	43.0	39.0	35.4	31.0	26.6	21.0	15.8	11.2	
80	42.6	39.0	35.2	30.8	26.6	21.0	15.8	11.2	
85	42.4	38.8	35.0	30.8	26.6	21.0	15.8	11.2	
90	42.0	38.4	35.0	30.6	26.6	21.0	15.8	11.2	
95	40.6	38.4	34.8	30.6	26.4	21.0	15.8	11.2	
100	38.6	37.8	34.6	30.6	26.4	21.0	15.8	11.2	
105	36.4	36.2	34.2	30.4	26.4	21.0	15.8	11.2	
110	33.6	34.8	33.6	30.4	26.4	21.0	15.8	11.2	
115	31.0	33.2	32.8	30.2	26.4	21.0	15.8	11.2	
120	28.4	31.4	32.4	30.0	26.2	21.0	15.8	11.2	
125	25.6	29.0	31.6	29.8	26.2	21.0	15.8	11.2	
130	23.4	26.2	29.2	28.2	26.0	21.0	15.8	11.2	
135	21.2	23.8	26.6	26.6	25.2	21.0	15.8	11.2	
140		21.4	24.2	24.8	24.2	21.0	15.8	11.2	
145			21.8	23.2	23.2	21.0	15.8	11.2	
150			18.8	21.4	22.0	21.0	15.8	11.2	
155					21.0	21.0	15.8	11.2	
160							15.8	11.2	



		Pounds (thousands)							
		82° MAIN BOOM ANGLE							
Feet	51	69	87	105	123	141	160	178	
60	31.6								
65	31.4								
70	31.0	28.2	25.8						
75	30.4	28.2	25.6	22.2	19.0				
80	30.2	28.0	25.4	22.0	19.0	14.4	10.6		
85	29.8	27.8	25.4	22.0	19.0	14.4	10.6		
90	29.4	27.4	25.2	21.8	19.0	14.4	10.6	6.8	
95	28.8	27.4	25.0	21.8	19.0	14.4	10.6	6.8	
100	28.4	27.0	24.6	21.8	19.0	14.4	10.6	6.8	
105	27.6	26.6	24.2	21.6	19.0	14.4	10.6	6.8	
110	26.8	26.0	24.0	21.4	18.8	14.4	10.6	6.8	
115	26.0	25.4	23.6	21.2	18.8	14.4	10.6	6.8	
120	25.4	24.4	23.0	21.2	18.8	14.4	10.6	6.8	
125	24.6	23.8	22.6	21.0	18.6	14.4	10.6	6.8	
130	23.8	23.4	22.4	20.8	18.6	14.4	10.6	6.8	
135	22.8	22.8	22.0	20.4	18.4	14.4	10.6	6.8	
140	22.0	22.2	21.4	20.2	18.4	14.4	10.6	6.8	
145	21.0	21.6	21.2	19.8	18.0	14.4	10.6	6.8	
150	19.2	20.4	20.6	19.6	17.8	14.4	10.6	6.8	
155	17.4	18.8	20.2	19.4	17.8	14.4	10.6	6.8	
160	15.6	17.4	19.2	19.0	17.6	14.4	10.6	6.8	
165		16.0	17.8	18.4	17.2	14.4	10.6	6.8	
170		14.2	16.0	17.2	16.6	14.4	10.6	6.8	
175			13.8	15.8	16.0	14.4	10.6	6.8	
180					15.2	14.4	10.6	6.8	
185							10.6	6.8	
190							10.6	6.8	

THIS CHART IS ONLY A GUIDE AND SHOULD NOT BE USED TO OPERATE THE CRANE.
The individual crane's load chart, operating instructions and other instructional plates must be read and understood prior to operating the crane.

LOAD CHARTS



Feet	82° MAIN BOOM ANGLE						
	51	69	87	105	123	141	160
70	21.6	19.8					
75	21.2	19.8	17.8				
80	20.8	19.6	17.6	15.2	12.8		
85	20.4	19.4	17.6	15.2	12.8		
90	19.6	19.4	17.4	15.2	12.8	9.2	6.2
95	19.0	18.8	17.4	15.2	12.8	9.2	6.2
100	18.4	18.0	17.4	15.2	12.8	9.2	6.2
105	17.6	17.6	16.8	15.0	12.8	9.2	6.2
110	17.2	17.0	16.4	14.8	12.8	9.2	6.2
115	16.6	16.4	16.0	14.8	12.8	9.2	6.2
120	15.8	15.8	15.6	14.6	12.6	9.2	6.2
125	15.4	15.2	15.2	14.6	12.6	9.2	6.2
130	14.8	14.8	14.6	14.4	12.6	9.2	6.2
135	14.2	14.2	14.2	14.0	12.6	9.2	6.2
140	13.8	13.8	14.0	13.8	12.4	9.2	6.2
145	13.4	13.4	13.6	13.4	12.2	9.2	6.2
150	13.0	13.0	13.0	12.8	12.2	9.2	6.2
155	12.6	12.6	12.8	12.6	12.0	9.2	6.2
160	12.2	12.2	12.4	12.2	11.8	9.2	6.2
165	11.8	11.8	12.0	11.8	11.6	9.2	6.2
170	11.6	11.6	11.8	11.6	11.2	9.2	6.2
175	11.2	11.2	11.4	11.2	11.2	9.2	6.2
180	10.6	10.8	11.0	11.0	10.8	9.2	6.2
185	10.2	10.4	11.0	10.8	10.4	9.2	6.2
190	10.0	10.2	10.6	10.4	10.4	9.2	6.2
195		9.8	10.2	10.2	10.0	9.2	6.2
200				10.0	10.0	9.2	6.2
205						9.2	6.2
210							6.2
215							6.2

THIS CHART IS ONLY A GUIDE AND SHOULD NOT BE USED TO OPERATE THE CRANE.
 The individual crane's load chart, operating instructions and other instructional plates must be read and understood prior to operating the crane.

Notes...

Corporate Office

4119 Sheep Pasture Road
Spring Hope, North Carolina 27882

1-877- EDWARDS



Crane Division

Edwards hydraulic crane service is noted as being the largest in North Carolina. We regularly serve our market with 24 hour availability. Our vast fleet of cranes range from 7.5 tons to our flagship 600 ton crane.

Our crane operators are certified by the National Commission for the Certification of Crane Operators (CCO).

visit us on the web today

www.edwardsinc.com

All references to "Edwards" refer to Edwards, Inc. The "Edwards, Inc." logo is a trademark of Edwards, Inc. All other trademarks used herein are the property of their respective owners. Edwards believes the information contained here to be true and accurate. Edwards makes no warranty, expressed or implied based on this literature and assumes no responsibility for consequential or incidental damages in the use or availability of the referenced equipment and specifications, including any warranty of merchantability or fitness. Information contained in this literature is provided for marketing and evaluation purposes only.

© 2009 Edwards, Inc. All rights reserved.