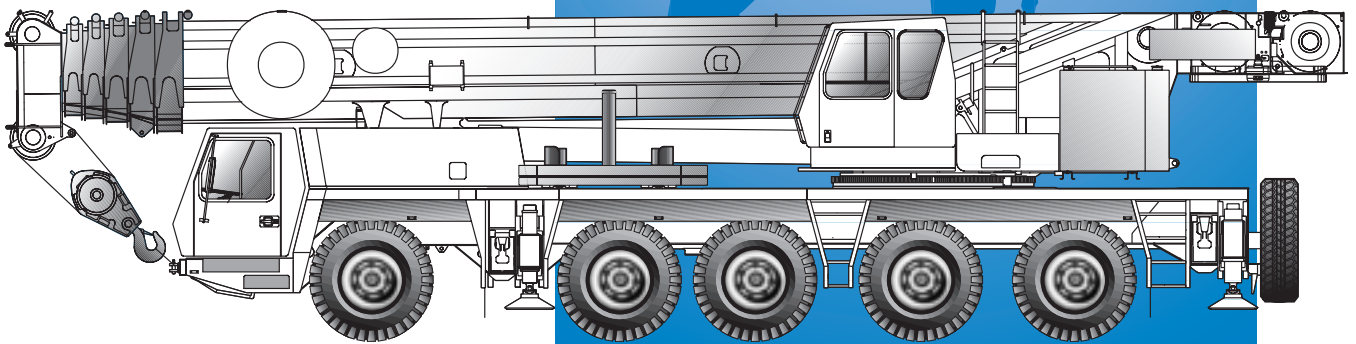




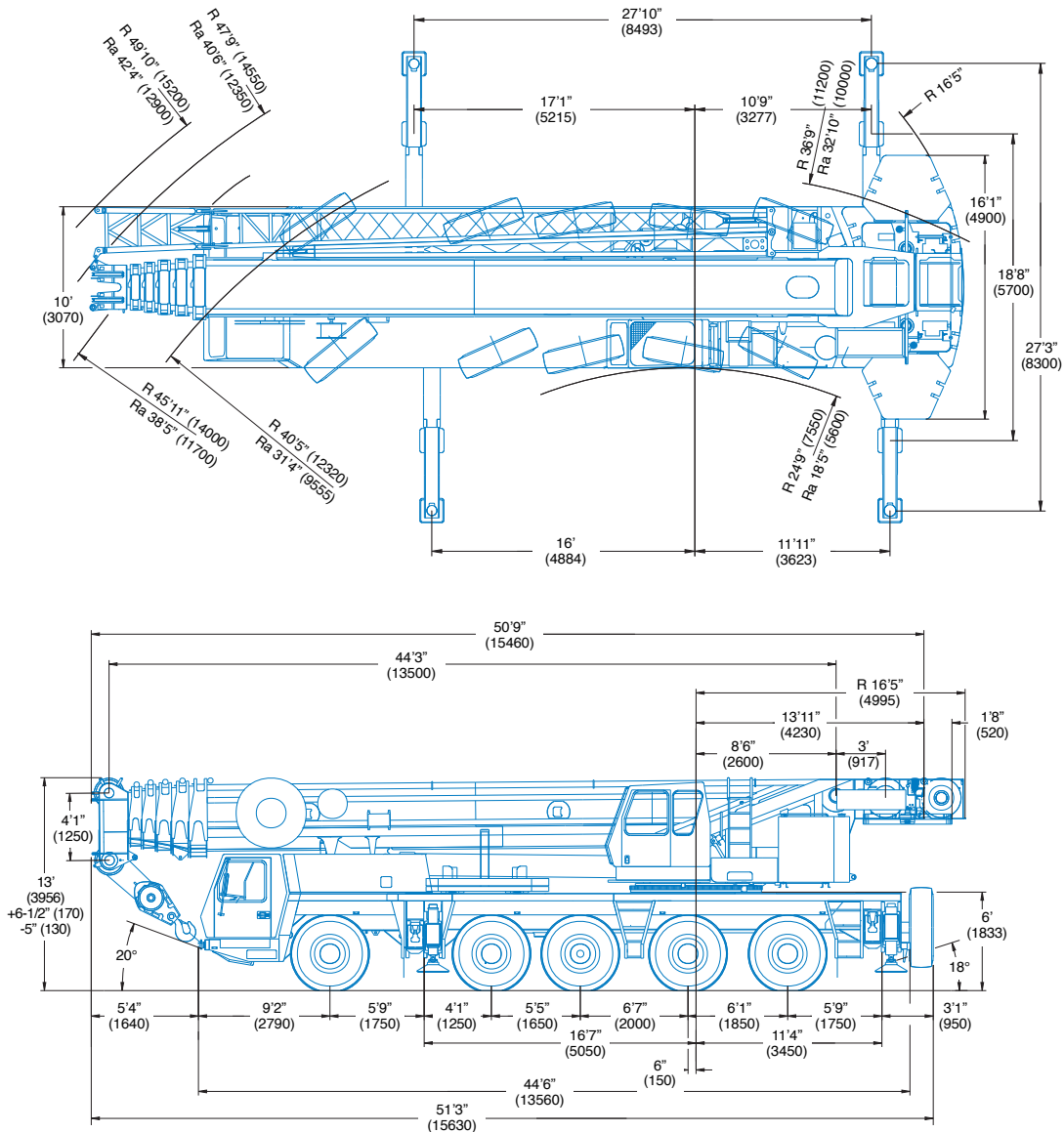
GMK5210



All Terrain Hydraulic Crane

Dimensions

Cummins Version



Note: () Reference dimensions in mm

| BASIC WEIGHTS (LBS.) | Axles 1 - 3 | Axles 4 & 5 | Total |
|---|-------------|-------------|-----------|
| With Cummins Power, 10x8x10, 20.5 R25 Tires | 82,480 | 52,060 | 134,540 |
| With Mercedes Power, 10x8x10, 20.5 R25 Tires | 80,544 | 53,115 | 133,659 |
| Additions: | | | |
| Outrigger Pads | 97 | 212 | 309 |
| Auxiliary Hoist | -(3,340) | 7,066 | 3,726 |
| Brackets & Hydraulic Reeling Drum for Lattice Extension | 934 | -(273) | 661 |
| Lattice Extension - 43/72 ft | 6,715 | -(1,424) | 5,291 |
| Spare Tire - 14.00 R25 (including stowage bracket) | -(395) | 979 | 584 |
| Spare Tire - 16.00 R25 (including stowage bracket) | -(485) | 1,202 | 717 |
| Spare Tire - 20.5 R25 (including stowage bracket) | -(553) | 1,362 | 809 |
| Removal: | | | |
| Front Outrigger Beams & Jacks | -(5,315) | 730 | -(4,585) |
| Rear Outrigger Beams & Jacks | 2,992 | -(8,614) | -(5,622) |
| Boom Assembly (minus lift cylinder)* | -(41,678) | -(3,230) | -(44,908) |
| Lift Cylinder* | -(3,404) | -(1,071) | -(4,475) |
| 10x6x10 in lieu of 10x8x10 | -(159) | -(701) | -(860) |
| 16.00 R25 Tires in lieu of 20.5 | -(556) | -(370) | -(926) |
| 14.00 R25 Tires in lieu of 20.5 | -(1,349) | -(900) | -(2,249) |

*Reflects weights with superstructure facing forward

Working range



44 - 197 ft.
(13.5 - 60 m)



138,800 lbs.
(63,000 kg)

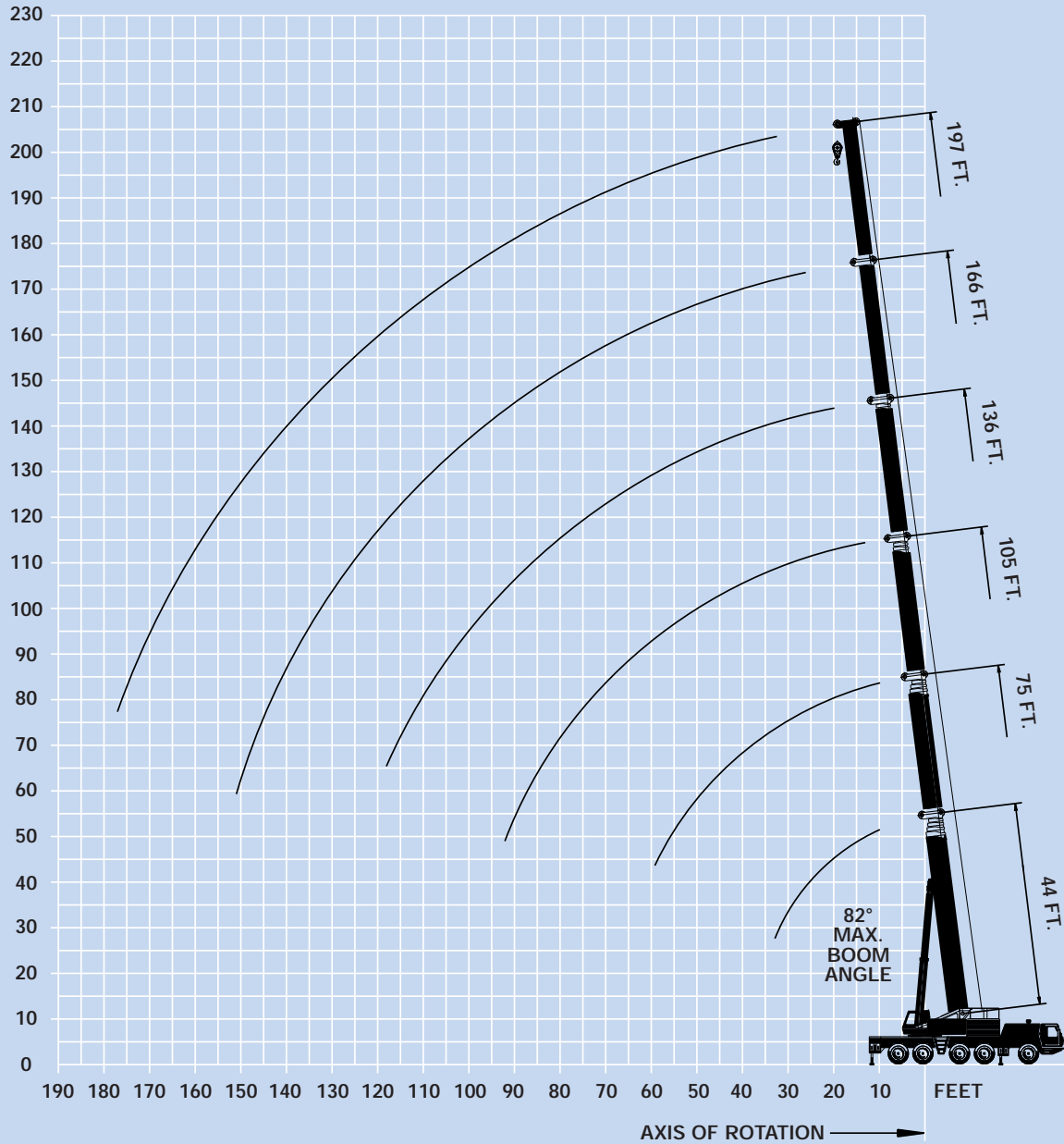


100%



360°

FEET



Superstructure specifications

Boom

44 ft. - 197 ft. (13.5 m - 60 m) six section, full-power boom with patented "twin-lock" boom pinning system. Maximum tip height: 207 ft. (63 m).

Boom Elevation

Single lift cylinder with safety valve provides boom angle from -1.5° to +82°.

Lattice Extension

43 ft. - 72 ft. (13 m - 22 m) lattice swingaway extension. Hydraulically offsettable 5° - 40° with hydraulic luffing.

*Optional Lattice Jib Extension

Two 26 ft. (8 m) inserts for use with lattice swingaway extension to increase length up to 98 ft. (30 m) or 125 ft. (38 m). Hydraulically offsettable 5° - 40° with hydraulic luffing.

Load Moment & Anti-Two Block System

Load moment and anti-two block system with audio/visual warning and control lever lockout provides electronic display of boom angle, length, radius, tip height, relative load moment, maximum permissible load, load indication and warning of impending two-block condition.

Cab

All aluminum construction cab is tiltable (approximately 20°) and includes safety glass and adjustable operator's seat with hydraulic suspension. Other features include engine dependent hot water heater, armrest integrated crane controls, and ergonomically arranged instrumentation.

Swing

3 swing gears with axial piston fixed displacement motors provide swing speed of 0 - 1.7 RPM thru planetary gear box. Also provided is a spring applied, hydraulically released automatic swing brake with foot-operated release for free swing.

Counterweight

138,800 lbs. (63 000 kg) consisting of various sections with hydraulic installation/removal system (see counterweight configuration on page 12).

Engine

Cummins 6BTA 5.9-C, diesel, 6 cylinders, water cooled, turbocharged, 165 HP (123 kW) at 2000 rpm. Max. torque: 538 ft./lbs. (730 Nm) at 1500 rpm. Engine emission: EUROMOT/EPA/CARB (off-highway).

Fuel Tank Capacity

53 gal. (200 L).

Hydraulic system

3 separate circuits, 2 axial piston variable displacement pumps, with electronic power limiting control and 1 axial piston variable displacement pump for swing. Standard thermostatically controlled oil cooler keeps oil at optimum operating temperature. Tank capacity: 259 gal. (980 L)

Control system

Full electronic control of all crane movements is accomplished using electrical control levers with automatic reset to zero. Controls are integrated with the LMI and engine management system by CAN-BUS.

Hoist

Main and auxiliary hoist are powered by axial piston variable displacement motor with planetary gear and brake. "Thumb-thumper" hoist drum rotation indicator alerts operator of hoist movement.

| | | |
|----------------|--------------------------|--------------------------|
| | <u>Main</u> | <u>Auxiliary</u> |
| Line length: | 984 ft. (300 m) | 755 ft. (230 m) |
| Rope diameter: | 22 mm | 22 mm |
| Line speed: | 426 ft./min. | 426 ft./min. |
| Line pull: | 21,000 lbs. (93.4 kN) | 21,000 lbs. (93.4 kN) |

Electrical system

24 V system with three-phase alternator 28 V/80 A, 2 batteries 12 V/170 Ah.

*Optional equipment

- *Mercedes engine version
- *Engine-independent hot water heater, with engine pre-heater
- *Second spotlight
- *Stereo/cassette player
- *Air Conditioning

Carrier specifications

Chassis

Box-type, torsion resistant frame is fabricated from high-strength steel.

Outrigger System

Hydraulic two-stage outrigger beams are extended by a single hydraulic cylinder and two cables. Outriggers can adjust to two positions:

Fully extended (100%) - 27' 3" (8.3 m)

Partially extended (50%) - 18' 8" (5.7 m)

Four 23.6 in. (600 mm) square, self stowing, nylatron outrigger pads provide rigid lifting base. Outrigger controls are located on both sides of the carrier. An electronic level indicator is located next to each outrigger control box.

Engine

Cummins Signature 600, diesel, 6 cylinders, water cooled, turbo charged and aftercooled, 600 HP (448 kW) at 2000 rpm. Max. torque: 2,050 ft./lbs. (2780 Nm) at 1200-1400 rpm.

Engine emission: EUROMOT/EPA/CARB (on highway).

Fuel Tank Capacity

106 gal. (400 L).

Transmission

Allison automatic CLT 755, 5 forward and 1 reverse speed. Transfer case with 2 speeds and inter-axle differential lock.

Drive/Steer

10 x 8 x 10

Axles

1st axle line - drive/steer.

2nd axle line - drive/steer.

3rd axle line - steer.

4th axle line - steer (off road only)/drive.

5th axle line - drive/steer.

Drive axles with planetary hub reduction and center mounted gearing

Suspension

GMK5210 features the Grove exclusive MEGATRAK[†] suspension. This revolutionary design features an independent hydroneumatic system with hydraulic lockout acting on all wheels. The suspension can be raised 6-1/2" (170 mm) or lowered 5" (130 mm) both longitudinally and transversely and features an automatic leveling system for on-highway travel.

Tires

10 tires, 20.5 R25.

Steering

Dual circuit steering system is hydraulic power assisted with a transfer case mounted, ground driven, emergency steering pump. Axles 1, 2, 3 and 5 steer on highway. Separate steering of the 4th and 5th axle for all wheel steer and crab-steer is controlled by an electric rocker switch.

Brakes

A dual circuit air system operates on all wheels with a spring-applied, air released parking brake acting on axles 2, 3, 4 and 5. An air dryer is fitted to remove moisture from the air system.

Engine compression brake (Cummins) or exhaust brake and constant throttle brake (Mercedes) is standard.

Cab

Two-man, aluminum construction driver's cab with thru access, includes the following features: safety glass; driver and passenger seats with hydraulic suspension, engine-dependent hot water heater, complete instrumentation and driving controls.

Electrical system

24 V system with three-phase alternator 28 V/100 A, 2 batteries 12 V/170 Ah.

Maximum Speed

51 mph (82 km/h) with 20.5 R25 Tires

Gradeability (theoretical)

55% with 20.5 R25 Tires

Miscellaneous standard equipment

Boom removal kit; trailing boom kit (less dolly); additional hydraulic oil cooler; spare tire and wheel - 20.5 R25 with carry bracket; flashing amber warning light on carrier cab; working light; tool kit; fire extinguisher; rooster sheave; radio cassette in carrier cab.

*Optional equipment

*Mercedes engine version

*10 x 6 x 10

*Electric driveline retarder

*16.00 R25 (vehicle width 9 ft. 10 in. [3 m])

*14.00 R25 tires (vehicle width 9 ft. 10 in. [3 m])

*Outrigger pressure measurement devices

*Folding bunk bed in carrier cab

*Engine-independent hot water heater, with engine pre-heater





*Third seat

*Trailing boom "boost" weight transfer kit

*Air conditioning

*Denotes optional equipment

† "G MEGATRAK" (and design) is a trademark of Grove U.S. L.L.C.

 44 - 197 ft.
 (13.5 - 60.0 m)
  138,800 lbs.
 (63,000 kg)
  100%
 27' 3" Spread
  360°





| Feet | Pounds (thousands) | | | | | | | | | | | |
|------|--------------------|-------|-------|-------|-------|-------|-------|------|------|------|------|------|
| | 44* | 44 | 60 | 75 | 90 | 105 | 121 | 136 | 151 | 166 | 182 | 197 |
| 9 | 420.0 | | | | | | | | | | | |
| 10 | 386.0 | 338.0 | 334.0 | 260.0 | 189.0 | | | | | | | |
| 15 | 308.0 | 262.0 | 264.0 | 258.0 | 189.0 | 153.0 | | | | | | |
| 20 | 254.0 | 211.0 | 213.0 | 209.0 | 187.0 | 153.0 | 121.0 | 92.0 | | | | |
| 25 | 210.0 | 176.0 | 178.0 | 175.0 | 174.0 | 150.0 | 121.0 | 87.0 | 68.0 | | | |
| 30 | 169.0 | 150.0 | 151.0 | 148.0 | 150.0 | 137.0 | 118.0 | 82.0 | 65.0 | 56.0 | 45.0 | |
| 35 | | | 131.0 | 128.0 | 130.0 | 123.0 | 109.0 | 76.0 | 63.0 | 54.0 | 44.0 | 38.8 |
| 40 | | | 115.0 | 112.0 | 114.0 | 112.0 | 99.0 | 73.0 | 61.0 | 52.0 | 43.0 | 38.4 |
| 45 | | | 103.0 | 99.0 | 101.0 | 102.0 | 90.0 | 66.0 | 59.0 | 50.0 | 42.2 | 37.4 |
| 50 | | | | 88.0 | 90.0 | 92.0 | 83.0 | 61.0 | 56.0 | 49.0 | 41.0 | 36.4 |
| 55 | | | | 78.0 | 80.0 | 82.0 | 77.0 | 57.0 | 51.0 | 47.0 | 39.8 | 35.4 |
| 60 | | | | | 70.0 | 72.0 | 72.0 | 54.0 | 47.0 | 43.8 | 38.4 | 34.4 |
| 65 | | | | | 65.0 | 63.0 | 66.0 | 51.0 | 42.4 | 40.0 | 36.8 | 33.4 |
| 70 | | | | | 58.0 | 56.0 | 59.0 | 48.0 | 39.4 | 37.2 | 35.4 | 32.4 |
| 75 | | | | | 52.0 | 52.0 | 53.0 | 45.0 | 36.4 | 34.4 | 33.2 | 31.4 |
| 80 | | | | | | 48.0 | 48.0 | 42.8 | 34.4 | 31.8 | 30.8 | 30.0 |
| 85 | | | | | | 45.0 | 43.4 | 41.0 | 33.0 | 30.0 | 28.6 | 28.0 |
| 90 | | | | | | 40.8 | 39.4 | 39.2 | 31.4 | 28.0 | 26.4 | 26.0 |
| 95 | | | | | | | 35.8 | 37.4 | 29.8 | 26.4 | 24.4 | 24.0 |
| 100 | | | | | | | | 32.6 | 34.6 | 28.4 | 25.0 | 22.4 |
| 105 | | | | | | | | | 31.8 | 27.2 | 23.6 | 21.2 |
| 110 | | | | | | | | | 29.2 | 26.2 | 22.2 | 19.8 |
| 115 | | | | | | | | | 27.0 | 25.0 | 20.8 | 18.6 |
| 120 | | | | | | | | | | 24.0 | 19.6 | 17.4 |
| 125 | | | | | | | | | | 22.8 | 18.6 | 16.4 |
| 130 | | | | | | | | | | 21.6 | 17.8 | 15.4 |
| 135 | | | | | | | | | | 20.6 | 17.0 | 14.6 |
| 140 | | | | | | | | | | | 16.2 | 14.0 |
| 145 | | | | | | | | | | | 15.4 | 13.2 |
| 150 | | | | | | | | | | | 14.8 | 12.6 |
| 155 | | | | | | | | | | | | 12.0 |
| 160 | | | | | | | | | | | | 11.6 |
| 165 | | | | | | | | | | | | |
| 170 | | | | | | | | | | | | |
| 175 | | | | | | | | | | | | |
| 180 | | | | | | | | | | | | |

* Over rear only, 27'10" x 18'8" outrigger base.
 Lifting capacities greater than 350,000 lbs (160,000 kg) require additional equipment.

 44 - 197 ft.
 (13.5 - 60.0 m)
  94,700 lbs.
 (43,000 kg)
  100%
 27' 3" Spread
  360°



| Feet | Pounds (thousands) | | | | | | | | | | | |
|------|--------------------|-------|-------|-------|-------|-------|-------|------|------|------|------|------|
| | 44* | 44 | 60 | 75 | 90 | 105 | 121 | 136 | 151 | 166 | 182 | 197 |
| 9 | 420.0 | | | | | | | | | | | |
| 10 | 386.0 | 328.0 | 326.0 | 260.0 | 189.0 | | | | | | | |
| 15 | 308.0 | 254.0 | 256.0 | 252.0 | 189.0 | 153.0 | | | | | | |
| 20 | 254.0 | 205.0 | 206.0 | 203.0 | 187.0 | 153.0 | 121.0 | 92.0 | | | | |
| 25 | 196.0 | 171.0 | 172.0 | 169.0 | 171.0 | 150.0 | 121.0 | 87.0 | 68.0 | | | |
| 30 | 155.0 | 145.0 | 146.0 | 143.0 | 145.0 | 137.0 | 118.0 | 82.0 | 65.0 | 56.0 | 45.0 | |
| 35 | | | 126.0 | 122.0 | 124.0 | 122.0 | 109.0 | 76.0 | 63.0 | 54.0 | 44.0 | 38.8 |
| 40 | | | 105.0 | 100.0 | 102.0 | 102.0 | 99.0 | 73.0 | 61.0 | 52.0 | 43.0 | 38.4 |
| 45 | | | 87.0 | 82.0 | 88.0 | 87.0 | 88.0 | 66.0 | 59.0 | 50.0 | 42.2 | 37.4 |
| 50 | | | | 68.0 | 75.0 | 75.0 | 75.0 | 61.0 | 56.0 | 49.0 | 41.0 | 36.4 |
| 55 | | | | 62.0 | 66.0 | 66.0 | 65.0 | 57.0 | 51.0 | 47.0 | 39.8 | 35.4 |
| 60 | | | | | 59.0 | 58.0 | 56.0 | 54.0 | 47.0 | 43.8 | 38.4 | 34.4 |
| 65 | | | | | 52.0 | 51.0 | 50.0 | 51.0 | 42.4 | 40.0 | 36.8 | 33.4 |
| 70 | | | | | 46.0 | 45.0 | 43.8 | 46.0 | 39.4 | 37.2 | 35.4 | 32.4 |
| 75 | | | | | 41.2 | 40.4 | 41.2 | 40.8 | 36.4 | 34.4 | 33.2 | 31.4 |
| 80 | | | | | | 36.2 | 38.2 | 36.6 | 34.4 | 31.8 | 30.8 | 30.0 |
| 85 | | | | | | 33.2 | 34.6 | 33.0 | 33.0 | 30.0 | 28.6 | 28.0 |
| 90 | | | | | | 31.8 | 31.4 | 29.6 | 30.8 | 28.0 | 26.4 | 26.0 |
| 95 | | | | | | | 28.4 | 27.2 | 27.8 | 26.4 | 24.4 | 24.0 |
| 100 | | | | | | | | 25.8 | 25.8 | 25.4 | 22.4 | 22.4 |
| 105 | | | | | | | | | 24.6 | 23.0 | 20.4 | 21.0 |
| 110 | | | | | | | | | 22.6 | 21.0 | 19.2 | 19.6 |
| 115 | | | | | | | | | 20.8 | 19.2 | 18.2 | 17.8 |
| 120 | | | | | | | | | | 17.4 | 17.8 | 17.2 |
| 125 | | | | | | | | | | 16.6 | 16.2 | 15.8 |
| 130 | | | | | | | | | | 15.8 | 14.8 | 14.4 |
| 135 | | | | | | | | | | 15.0 | 13.6 | 13.0 |
| 140 | | | | | | | | | | | 12.4 | 11.8 |
| 145 | | | | | | | | | | | 11.6 | 10.8 |
| 150 | | | | | | | | | | | 10.6 | 9.8 |
| 155 | | | | | | | | | | | | 8.8 |
| 160 | | | | | | | | | | | | 7.8 |
| 165 | | | | | | | | | | | | 6.0 |
| 170 | | | | | | | | | | | | 5.2 |
| 175 | | | | | | | | | | | | 4.4 |
| 180 | | | | | | | | | | | | 3.8 |


* Over rear only, 27'10" x 18'8" outrigger base.
 Lifting capacities greater than 350,000 lbs (160,000 kg) require additional equipment.

 44 - 197 ft. (13.5 - 60.0 m) 47,300 lbs. (21,500 kg) 100% 27' 3" Spread 360°





| Pounds (thousands) | | | | | | | | | | | |
|--------------------|-------|-------|-------|-------|-------|-------|------|------|------|------|------|
| Feet | 44 | 60 | 75 | 90 | 105 | 121 | 136 | 151 | 166 | 182 | 197 |
| 10 | 316.0 | 316.0 | 260.0 | 189.0 | | | | | | | |
| 15 | 246.0 | 248.0 | 244.0 | 189.0 | 153.0 | | | | | | |
| 20 | 197.0 | 199.0 | 196.0 | 187.0 | 153.0 | 121.0 | 92.0 | | | | |
| 25 | 157.0 | 161.0 | 144.0 | 142.0 | 133.0 | 121.0 | 87.0 | 68.0 | | | |
| 30 | 117.0 | 122.0 | 109.0 | 112.0 | 110.0 | 102.0 | 82.0 | 65.0 | 56.0 | 45.0 | |
| 35 | | 92.0 | 89.0 | 95.0 | 89.0 | 83.0 | 76.0 | 63.0 | 54.0 | 44.0 | 38.8 |
| 40 | | 75.0 | 77.0 | 78.0 | 74.0 | 69.0 | 69.0 | 61.0 | 52.0 | 43.0 | 38.4 |
| 45 | | 61.0 | 64.0 | 64.0 | 63.0 | 61.0 | 59.0 | 53.0 | 50.0 | 42.2 | 37.4 |
| 50 | | | 53.0 | 54.0 | 53.0 | 55.0 | 51.0 | 50.0 | 45.0 | 41.0 | 36.4 |
| 55 | | | 45.0 | 46.0 | 48.0 | 47.0 | 44.0 | 44.0 | 42.4 | 38.6 | 35.4 |
| 60 | | | | 39.4 | 41.6 | 40.6 | 40.6 | 38.8 | 38.0 | 36.2 | 33.8 |
| 65 | | | | 36.2 | 36.4 | 35.4 | 36.4 | 34.8 | 33.8 | 32.2 | 29.8 |
| 70 | | | | 32.0 | 32.2 | 32.2 | 32.4 | 32.2 | 30.6 | 28.6 | 26.4 |
| 75 | | | | 28.2 | 28.4 | 29.2 | 28.4 | 28.4 | 27.4 | 25.4 | 23.4 |
| 80 | | | | | 25.2 | 26.0 | 25.8 | 25.2 | 24.2 | 22.8 | 20.8 |
| 85 | | | | | 22.2 | 23.2 | 23.0 | 22.4 | 21.4 | 20.2 | 18.4 |
| 90 | | | | | 19.8 | 20.8 | 20.6 | 20.0 | 19.0 | 18.0 | 16.2 |
| 95 | | | | | | 18.6 | 18.4 | 18.0 | 17.0 | 15.8 | 14.4 |
| 100 | | | | | | 16.8 | 16.6 | 16.0 | 15.0 | 14.0 | 12.6 |
| 105 | | | | | | | 14.8 | 14.4 | 13.4 | 12.4 | 11.0 |
| 110 | | | | | | | 13.4 | 12.8 | 11.8 | 10.8 | 9.6 |
| 115 | | | | | | | 11.8 | 11.4 | 10.4 | 9.4 | 8.2 |
| 120 | | | | | | | | 10.2 | 9.2 | 8.2 | 7.0 |
| 125 | | | | | | | | 9.0 | 8.0 | 7.0 | 5.8 |
| 130 | | | | | | | | 7.8 | 7.0 | 6.0 | 4.8 |
| 135 | | | | | | | | 6.8 | 6.0 | 5.0 | 3.8 |
| 140 | | | | | | | | | 5.0 | 4.0 | 3.0 |
| 145 | | | | | | | | | 4.2 | 3.2 | |
| 150 | | | | | | | | | 3.4 | | |



 44 - 197 ft. (13.5 - 60.0 m) 28,600 lbs. (13,000 kg) 100% 27' 3" Spread 360°

| Pounds (thousands) | | | | | | | | | | | |
|--------------------|-------|-------|-------|-------|-------|-------|------|------|------|------|------|
| Feet | 44 | 60 | 75 | 90 | 105 | 121 | 136 | 151 | 166 | 182 | 197 |
| 10 | 312.0 | 312.0 | 260.0 | 189.0 | | | | | | | |
| 15 | 242.0 | 244.0 | 240.0 | 189.0 | 153.0 | | | | | | |
| 20 | 190.0 | 193.0 | 169.0 | 158.0 | 150.0 | 121.0 | 92.0 | | | | |
| 25 | 142.0 | 139.0 | 119.0 | 121.0 | 118.0 | 108.0 | 87.0 | 68.0 | | | |
| 30 | 97.0 | 102.0 | 100.0 | 98.0 | 91.0 | 84.0 | 82.0 | 65.0 | 56.0 | 45.0 | |
| 35 | | 79.0 | 81.0 | 79.0 | 74.0 | 73.0 | 68.0 | 61.0 | 54.0 | 44.0 | 38.8 |
| 40 | | 62.0 | 64.0 | 65.0 | 61.0 | 61.0 | 56.0 | 56.0 | 48.0 | 43.0 | 38.4 |
| 45 | | 50.0 | 52.0 | 53.0 | 55.0 | 52.0 | 51.0 | 47.0 | 46.0 | 41.0 | 37.4 |
| 50 | | | 43.6 | 46.0 | 46.0 | 45.0 | 44.0 | 43.0 | 39.6 | 37.6 | 34.8 |
| 55 | | | 37.4 | 39.4 | 39.4 | 39.8 | 38.6 | 37.4 | 35.0 | 32.4 | 29.8 |
| 60 | | | | 34.0 | 34.0 | 34.8 | 33.6 | 32.6 | 30.4 | 28.0 | 25.6 |
| 65 | | | | 29.4 | 29.4 | 30.2 | 29.4 | 28.6 | 26.6 | 24.4 | 22.0 |
| 70 | | | | 25.4 | 25.4 | 26.4 | 25.4 | 25.2 | 23.2 | 21.2 | 19.0 |
| 75 | | | | 22.0 | 22.0 | 23.0 | 22.0 | 22.2 | 20.4 | 18.4 | 16.4 |
| 80 | | | | | 19.2 | 20.0 | 19.2 | 19.4 | 18.0 | 16.0 | 14.2 |
| 85 | | | | | 16.6 | 17.6 | 16.8 | 16.8 | 15.8 | 14.0 | 12.0 |
| 90 | | | | | 14.4 | 15.4 | 14.6 | 14.8 | 13.8 | 12.2 | 10.2 |
| 95 | | | | | | 13.6 | 12.8 | 12.8 | 11.8 | 10.4 | 8.6 |
| 100 | | | | | | 12.0 | 11.0 | 11.2 | 10.2 | 9.0 | 7.2 |
| 105 | | | | | | | 9.6 | 9.8 | 8.8 | 7.6 | 5.8 |
| 110 | | | | | | | 8.2 | 8.4 | 7.4 | 6.4 | 4.8 |
| 115 | | | | | | | | 7.2 | 6.2 | 5.2 | 3.6 |
| 120 | | | | | | | | 6.2 | 5.2 | 4.2 | 2.6 |
| 125 | | | | | | | | 5.2 | 4.2 | 3.2 | |
| 130 | | | | | | | | 4.2 | 3.2 | | |
| 135 | | | | | | | | 3.4 | | | |

 44 - 197 ft. (13.5 - 60.0 m) 0 lbs. (0 kg) 100% 27' 3" Spread 360°

| Pounds (thousands) | | | | | | | | | | | |
|--------------------|-------|-------|-------|-------|-------|------|------|------|------|------|------|
| Feet | 44 | 60 | 75 | 90 | 105 | 121 | 136 | 151 | 166 | 182 | 197 |
| 10 | 306.0 | 306.0 | 260.0 | 189.0 | | | | | | | |
| 15 | 232.0 | 208.0 | 164.0 | 155.0 | 141.0 | | | | | | |
| 20 | 137.0 | 126.0 | 119.0 | 108.0 | 97.0 | 92.0 | 82.0 | | | | |
| 25 | 93.0 | 91.0 | 87.0 | 80.0 | 78.0 | 70.0 | 67.0 | 59.0 | | | |
| 30 | 65.0 | 68.0 | 66.0 | 65.0 | 60.0 | 57.0 | 53.0 | 49.0 | 45.0 | 40.4 | |
| 35 | | 52.0 | 52.0 | 51.0 | 48.0 | 46.0 | 43.0 | 39.8 | 36.2 | 32.6 | 29.0 |
| 40 | | 40.0 | 41.4 | 41.4 | 38.8 | 37.8 | 35.4 | 32.6 | 29.6 | 26.4 | 23.4 |
| 45 | | 30.4 | 33.8 | 34.2 | 32.0 | 31.4 | 29.4 | 27.2 | 24.4 | 21.6 | 18.6 |
| 50 | | | 27.2 | 28.4 | 26.8 | 26.4 | 24.8 | 22.6 | 20.2 | 17.4 | 14.8 |
| 55 | | | 21.8 | 24.0 | 22.4 | 22.2 | 20.8 | 18.8 | 16.6 | 14.0 | 11.6 |
| 60 | | | | 19.8 | 18.6 | 18.8 | 17.4 | 15.6 | 13.6 | 11.2 | 9.0 |
| 65 | | | | 16.4 | 15.6 | 15.8 | 14.6 | 13.0 | 11.0 | 8.8 | 6.8 |
| 70 | | | | 13.2 | 13.0 | 13.2 | 12.2 | 10.8 | 8.8 | 6.8 | 4.8 |
| 75 | | | | 10.8 | 10.8 | 11.2 | 10.2 | 8.8 | 7.0 | 5.0 | 3.2 |
| 80 | | | | | 8.6 | 9.4 | 8.4 | 7.2 | 5.4 | 3.6 | |
| 85 | | | | | 6.8 | 7.8 | 6.8 | 5.6 | 4.0 | | |
| 90 | | | | | 5.2 | 6.4 | 5.4 | 4.4 | 2.8 | | |
| 95 | | | | | | 5.0 | 4.2 | 3.2 | | | |
| 100 | | | | | | 3.8 | 3.2 | | | | |

THIS CHART IS ONLY A GUIDE AND SHOULD NOT BE USED TO OPERATE THE CRANE. The individual crane's load chart, operating instructions and other instructional plates must be read and understood prior to operating the crane.

Working Range



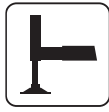
121 - 197 ft.
(36,8 - 60 m)



43 - 125 ft.
(13 - 38 m)



138,800 lbs.
(63,000 kg)

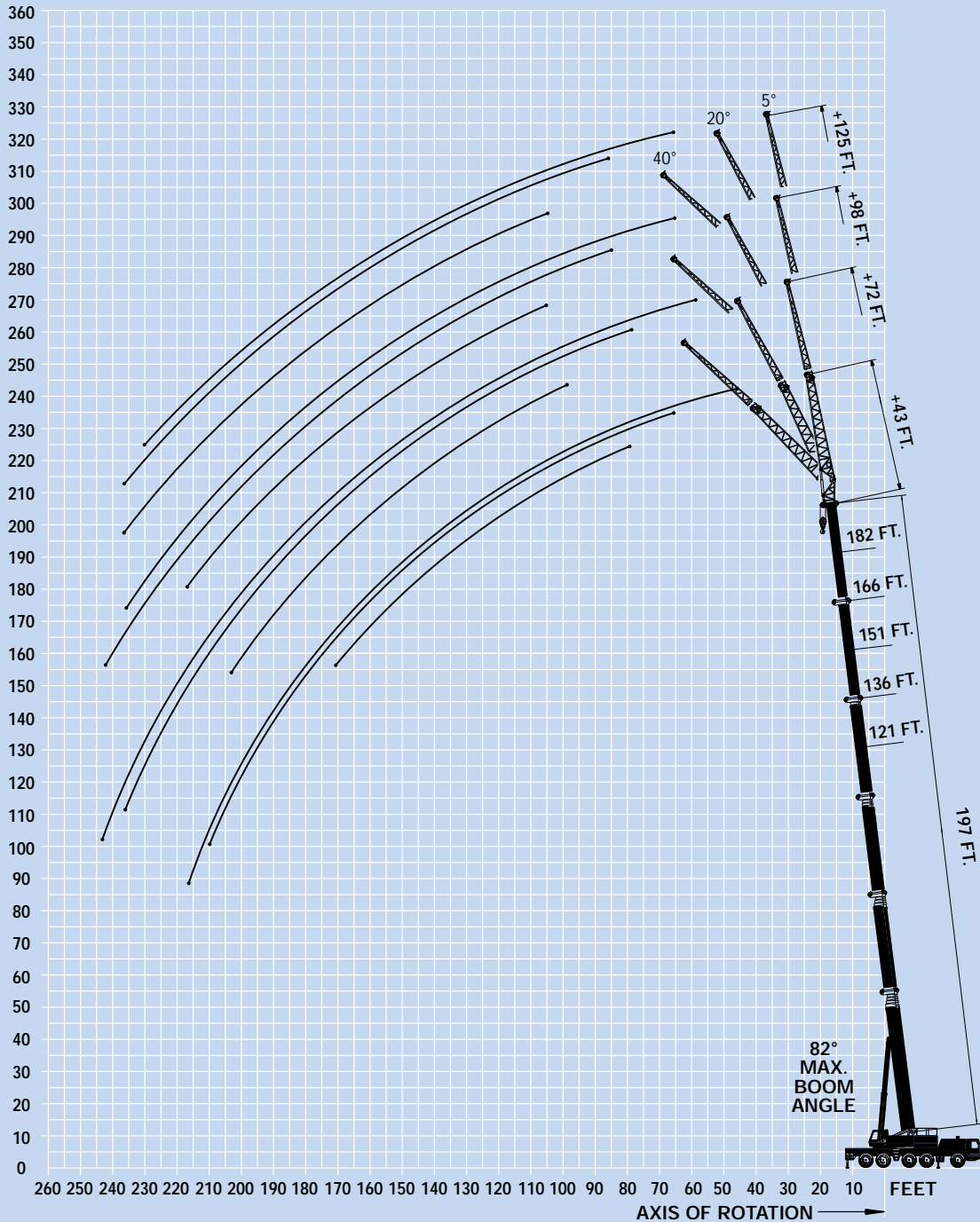


100%



360°

FEET



 197 ft. (60.0 m)
  43-72-98-125 ft. (13-22-30-38 m)
  138,800 lbs. (63,000 kg)
  100% 27' 3" Spread
  360°

| Feet | Pounds (thousands) | | | | | | | | | | | |
|------|--------------------|------|------|-------|------|------|-------|-----|-----|--------|-----|-----|
| | 43 FT | | | 72 FT | | | 98 FT | | | 125 FT | | |
| | 5° | 20° | 40° | 5° | 20° | 40° | 5° | 20° | 40° | 5° | 20° | 40° |
| 40 | 18.6 | | | | | | | | | | | |
| 45 | 18.6 | | | | | | | | | | | |
| 50 | 18.4 | | | | | | | | | | | |
| 55 | 18.4 | 18.6 | | 12.2 | | | | | | | | |
| 60 | 18.4 | 18.6 | | 12.2 | | | 9.2 | | | 6.4 | | |
| 65 | 18.2 | 18.4 | | 12.2 | | | 9.2 | | | 6.4 | | |
| 70 | 18.2 | 18.4 | 18.0 | 12.2 | | | 9.2 | | | 6.4 | | |
| 75 | 18.2 | 18.4 | 18.0 | 12.2 | 11.0 | | 9.2 | | | 6.4 | | |
| 80 | 18.2 | 18.4 | 18.0 | 12.2 | 10.8 | | 9.2 | | | 6.4 | | |
| 85 | 18.0 | 18.2 | 18.0 | 12.2 | 10.8 | | 9.2 | | | 6.4 | | |
| 90 | 17.6 | 18.0 | 18.0 | 12.2 | 10.8 | | 9.2 | 9.2 | | 6.4 | 6.4 | |
| 95 | 17.4 | 17.8 | 18.0 | 12.0 | 10.6 | 10.0 | 9.2 | 9.2 | | 6.4 | 6.4 | |
| 100 | 17.0 | 17.4 | 18.0 | 12.0 | 10.6 | 10.0 | 9.2 | 9.2 | 7.8 | 6.4 | 6.4 | |
| 105 | 16.6 | 17.0 | 17.4 | 12.0 | 10.6 | 10.0 | 9.2 | 9.2 | 7.8 | 6.4 | 6.4 | 6.4 |
| 110 | 16.2 | 16.6 | 16.6 | 11.8 | 10.4 | 10.0 | 9.2 | 9.2 | 7.8 | 6.4 | 6.4 | 6.4 |
| 115 | 15.6 | 15.8 | 16.0 | 11.8 | 10.4 | 9.8 | 9.2 | 9.0 | 7.8 | 6.4 | 6.4 | 6.4 |
| 120 | 14.6 | 15.0 | 15.2 | 11.6 | 10.4 | 9.8 | 9.2 | 8.8 | 7.8 | 6.4 | 6.4 | 6.4 |
| 125 | 13.8 | 14.0 | 14.4 | 11.6 | 10.4 | 9.8 | 9.2 | 8.6 | 7.8 | 6.4 | 6.2 | 6.2 |
| 130 | 13.0 | 13.2 | 13.8 | 11.6 | 10.4 | 9.6 | 9.2 | 8.6 | 7.8 | 6.4 | 6.2 | 6.2 |
| 135 | 12.4 | 12.6 | 13.0 | 11.4 | 10.2 | 9.6 | 9.0 | 8.4 | 7.8 | 6.4 | 6.0 | 6.0 |
| 140 | 11.6 | 12.0 | 12.4 | 11.0 | 10.2 | 9.6 | 8.8 | 8.2 | 7.8 | 6.2 | 6.0 | 5.8 |
| 145 | 11.0 | 11.2 | 11.8 | 10.4 | 10.0 | 9.4 | 8.6 | 8.0 | 7.6 | 6.2 | 5.8 | 5.8 |
| 150 | 10.4 | 10.6 | 11.0 | 10.0 | 9.8 | 9.4 | 8.4 | 8.0 | 7.6 | 6.0 | 5.8 | 5.6 |
| 155 | 9.6 | 10.0 | 10.4 | 9.4 | 9.6 | 9.4 | 8.0 | 7.8 | 7.4 | 5.8 | 5.6 | 5.6 |
| 160 | 9.0 | 9.4 | 9.8 | 9.0 | 9.2 | 9.2 | 7.8 | 7.6 | 7.4 | 5.8 | 5.4 | 5.4 |
| 165 | 8.4 | 8.8 | 9.2 | 8.6 | 9.0 | 9.2 | 7.6 | 7.4 | 7.2 | 5.6 | 5.4 | 5.2 |
| 170 | 8.0 | 8.2 | 8.6 | 8.0 | 8.6 | 8.8 | 7.2 | 7.2 | 7.0 | 5.4 | 5.2 | 5.2 |
| 175 | 7.4 | 7.8 | | 7.6 | 8.0 | 8.4 | 6.8 | 6.8 | 6.8 | 5.2 | 5.2 | 5.0 |
| 180 | 7.0 | 7.2 | | 7.2 | 7.6 | 8.0 | 6.6 | 6.6 | 6.8 | 5.0 | 5.0 | 5.0 |
| 185 | 6.6 | 6.8 | | 6.8 | 7.2 | 7.6 | 6.2 | 6.4 | 6.6 | 5.0 | 5.0 | 4.8 |
| 190 | 6.0 | 6.2 | | 6.2 | 6.8 | 7.2 | 5.8 | 6.0 | 6.4 | 4.8 | 4.8 | 4.8 |
| 195 | 5.6 | 5.8 | | 5.8 | 6.4 | 7.0 | 5.4 | 5.8 | 6.2 | 4.6 | 4.6 | 4.6 |
| 200 | 5.2 | 5.4 | | 5.4 | 6.0 | 6.4 | 5.0 | 5.4 | 6.0 | 4.4 | 4.4 | 4.6 |
| 205 | 4.8 | 5.0 | | 5.0 | 5.6 | | 4.8 | 5.2 | 5.6 | 4.0 | 4.2 | 4.4 |
| 210 | 4.4 | | | 4.8 | 5.2 | | 4.4 | 4.8 | 5.2 | 3.8 | 4.0 | 4.2 |
| 215 | 4.0 | | | 4.4 | 4.8 | | 4.0 | 4.4 | 4.8 | 3.4 | 3.8 | 4.0 |
| 220 | | | | 4.0 | 4.4 | | 3.6 | 4.0 | | 3.2 | 3.6 | 3.8 |
| 225 | | | | 3.6 | 4.0 | | 3.4 | 3.6 | | 2.8 | 3.2 | 3.6 |
| 230 | | | | 3.2 | 3.6 | | 3.0 | 3.4 | | 2.6 | 3.0 | 3.4 |
| 235 | | | | 3.0 | 3.2 | | 2.6 | 3.0 | | 2.4 | 2.8 | 3.2 |
| 240 | | | | 2.6 | | | 2.4 | | 2.8 | | 2.4 | |
| 245 | | | | 2.4 | | | | | 2.4 | | | |

 197 ft. (60.0 m)
  43-72-98-125 ft. (13-22-30-38 m)
  138,800 lbs. (63,000 kg)
  100% 27' 3" Spread
  360°

| Feet | Pounds (thousands) | | | | | | | | | | | |
|------|--------------------|-----------|----------|-----------|----------|-----------|----------|-----------|----------|-----------|-----|--|
| | 43 FT | | 72 FT | | 98 FT | | 125 FT | | | | | |
| | 5° - 20° | 20° - 40° | 5° - 20° | 20° - 40° | 5° - 20° | 20° - 40° | 5° - 20° | 20° - 40° | 5° - 20° | 20° - 40° | | |
| 55 | 16.8 | | | | | | | | | | | |
| 60 | 16.8 | | | | | | | | | | | |
| 65 | 16.8 | | | | | | | | | | | |
| 70 | 16.8 | 16.4 | | | | | | | | | | |
| 75 | 16.8 | 16.4 | | 10.0 | | | | | | | | |
| 80 | 16.8 | 16.4 | | 9.8 | | | | | | | | |
| 85 | 16.6 | 16.4 | | 9.8 | | | | | | | | |
| 90 | 16.4 | 16.4 | | 9.8 | | | | | | | | |
| 95 | 16.2 | 16.4 | | 9.6 | 9.2 | | 8.4 | | | 5.8 | | |
| 100 | 15.8 | 16.2 | | 9.6 | 9.0 | | 8.4 | 7.0 | | 5.8 | | |
| 105 | 15.4 | 15.8 | | 9.6 | 9.0 | | 8.4 | 7.0 | | 5.8 | 5.8 | |
| 110 | 15.0 | 15.2 | | 9.6 | 9.0 | | 8.4 | 7.0 | | 5.8 | 5.8 | |
| 115 | 14.4 | 14.4 | | 9.4 | 9.0 | | 8.2 | 7.0 | | 5.8 | 5.8 | |
| 120 | 13.6 | 13.8 | | 9.4 | 9.0 | | 8.0 | 7.0 | | 5.8 | 5.8 | |
| 125 | 12.8 | 13.2 | | 9.4 | 8.8 | | 7.8 | 7.0 | | 5.8 | 5.8 | |
| 130 | 12.0 | 12.4 | | 9.4 | 8.8 | | 7.8 | 7.0 | | 5.6 | 5.6 | |
| 135 | 11.4 | 11.8 | | 9.4 | 8.6 | | 7.6 | 7.0 | | 5.6 | 5.4 | |
| 140 | 10.8 | 11.2 | | 9.4 | 8.6 | | 7.4 | 7.0 | | 5.4 | 5.4 | |
| 145 | 10.2 | 10.6 | | 9.2 | 8.6 | | 7.4 | 7.0 | | 5.4 | 5.2 | |
| 150 | 9.6 | 10.0 | | 9.0 | 8.6 | | 7.2 | 6.8 | | 5.2 | 5.2 | |
| 155 | 9.2 | 9.4 | | 8.6 | 8.4 | | 7.0 | 6.8 | | 5.2 | 5.0 | |
| 160 | 8.6 | 8.8 | | 8.4 | 8.4 | | 7.0 | 6.6 | | 5.0 | 5.0 | |
| 165 | 8.0 | 8.4 | | 8.2 | 8.4 | | 6.8 | 6.6 | | 4.8 | 4.8 | |
| 170 | 7.6 | 7.8 | | 7.8 | 8.0 | | 6.6 | 6.4 | | 4.8 | 4.8 | |
| 175 | 7.0 | | | 7.4 | 7.6 | | 6.2 | 6.2 | | 4.6 | 4.6 | |
| 180 | 6.6 | | | 7.0 | 7.4 | | 6.0 | 6.2 | | 4.6 | 4.6 | |
| 185 | 6.2 | | | 6.6 | 7.0 | | 5.8 | 6.0 | | 4.4 | 4.4 | |
| 190 | 5.6 | | | 6.2 | 6.6 | | 5.6 | 5.8 | | 4.4 | 4.4 | |
| 195 | 5.2 | | | 5.8 | 6.2 | | 5.2 | 5.6 | | 4.2 | 4.2 | |
| 200 | 4.8 | | | 5.4 | 5.8 | | 5.0 | 5.4 | | 4.0 | 4.2 | |
| 205 | 4.4 | | | 5.0 | | | 4.6 | 5.0 | | 3.8 | 4.0 | |
| 210 | | | | 4.6 | | | 4.4 | 4.8 | | 3.6 | 3.8 | |
| 215 | | | | 4.0 | | | 4.0 | 4.4 | | 3.4 | 3.6 | |
| 220 | | | | 4.0 | | | 3.6 | | | 3.2 | 3.4 | |
| 225 | | | | 3.6 | | | 3.4 | | | 3.0 | 3.2 | |
| 230 | | | | 3.2 | | | 3.0 | | | 2.8 | 3.2 | |
| 235 | | | | 3.0 | | | 2.8 | | | 2.6 | 2.8 | |
| 240 | | | | | | | 2.4 | | | 2.2 | | |

THIS CHART IS ONLY A GUIDE AND SHOULD NOT BE USED TO OPERATE THE CRANE. The individual crane's load chart, operating instructions and other instructional plates must be read and understood prior to operating the crane.

 197 ft. (60.0 m)
  43-72-98-125 ft. (13-22-30-38 m)
  94,700 lbs. (43,000 kg)
  100% 27' 3" Spread
  360°

| Feet | Pounds (thousands) | | | | | | | | | | | |
|------|--------------------|------|------|--------------|------|------|--------------|-----|-----|---------------|-----|-----|
| | 43 FT 20° | | | 72 FT 20° | | | 98 FT 20° | | | 125 FT 20° | | |
| | 5° | 20° | 40° | 5° | 20° | 40° | 5° | 20° | 40° | 5° | 20° | 40° |
| 40 | 18.6 | | | | | | | | | | | |
| 45 | 18.6 | | | | | | | | | | | |
| 50 | 18.4 | | | | | | | | | | | |
| 55 | 18.4 | 18.6 | | 12.2 | | | | | | | | |
| 60 | 18.4 | 18.6 | | 12.2 | | | 9.2 | | | 6.4 | | |
| 65 | 18.2 | 18.4 | | 12.2 | | | 9.2 | | | 6.4 | | |
| 70 | 18.2 | 18.4 | 18.0 | 12.2 | | | 9.2 | | | 6.4 | | |
| 75 | 18.2 | 18.4 | 18.0 | 12.2 | 11.0 | | 9.2 | | | 6.4 | | |
| 80 | 18.2 | 18.4 | 18.0 | 12.2 | 10.8 | | 9.2 | | | 6.4 | | |
| 85 | 18.0 | 18.2 | 18.0 | 12.2 | 10.8 | | 9.2 | | | 6.4 | | |
| 90 | 17.6 | 18.0 | 18.0 | 12.2 | 10.8 | | 9.2 | 9.2 | | 6.4 | 6.4 | |
| 95 | 17.4 | 17.8 | 18.0 | 12.0 | 10.6 | 10.0 | 9.2 | 9.2 | | 6.4 | 6.4 | |
| 100 | 17.0 | 17.4 | 18.0 | 12.0 | 10.6 | 10.0 | 9.2 | 9.2 | 7.8 | 6.4 | 6.4 | |
| 105 | 16.6 | 17.0 | 17.4 | 12.0 | 10.6 | 10.0 | 9.2 | 9.2 | 7.8 | 6.4 | 6.4 | 6.4 |
| 110 | 16.2 | 16.6 | 16.6 | 11.8 | 10.4 | 10.0 | 9.2 | 9.2 | 7.8 | 6.4 | 6.4 | 6.4 |
| 115 | 15.6 | 15.8 | 16.0 | 11.8 | 10.4 | 9.8 | 9.2 | 9.0 | 7.8 | 6.4 | 6.4 | 6.4 |
| 120 | 14.6 | 15.0 | 15.2 | 11.6 | 10.4 | 9.8 | 9.2 | 8.8 | 7.8 | 6.4 | 6.4 | 6.4 |
| 125 | 13.8 | 14.0 | 14.4 | 11.6 | 10.4 | 9.8 | 9.2 | 8.6 | 7.8 | 6.4 | 6.2 | 6.2 |
| 130 | 13.0 | 13.2 | 13.8 | 11.6 | 10.4 | 9.6 | 9.2 | 8.6 | 7.8 | 6.4 | 6.2 | 6.2 |
| 135 | 12.2 | 12.6 | 13.0 | 11.4 | 10.2 | 9.6 | 9.0 | 8.4 | 7.8 | 6.4 | 6.0 | 6.0 |
| 140 | 10.8 | 11.6 | 12.2 | 11.0 | 10.2 | 9.6 | 8.8 | 8.2 | 7.8 | 6.2 | 6.0 | 5.8 |
| 145 | 9.8 | 10.4 | 11.0 | 10.4 | 10.0 | 9.4 | 8.6 | 8.0 | 7.6 | 6.2 | 5.8 | 5.8 |
| 150 | 8.8 | 9.4 | 9.8 | 10.0 | 9.8 | 9.4 | 8.4 | 8.0 | 7.6 | 6.0 | 5.8 | 5.6 |
| 155 | 7.8 | 8.4 | 8.8 | 9.4 | 9.6 | 9.4 | 8.0 | 7.8 | 7.4 | 5.8 | 5.6 | 5.6 |
| 160 | 6.8 | 7.4 | 7.8 | 8.4 | 9.2 | 9.2 | 7.8 | 7.6 | 7.4 | 5.8 | 5.4 | 5.4 |
| 165 | 6.0 | 6.4 | 6.8 | 7.6 | 8.8 | 9.2 | 7.6 | 7.4 | 7.2 | 5.6 | 5.4 | 5.2 |
| 170 | 5.2 | 5.6 | 6.0 | 6.8 | 7.8 | 8.8 | 7.0 | 7.2 | 7.0 | 5.4 | 5.2 | 5.2 |
| 175 | 4.4 | 4.8 | | 6.0 | 7.0 | 7.8 | 6.2 | 6.8 | 6.8 | 5.2 | 5.2 | 5.0 |
| 180 | 3.8 | 4.2 | | 5.4 | 6.2 | 7.0 | 5.4 | 6.4 | 6.8 | 5.0 | 5.0 | 5.0 |
| 185 | 3.0 | 3.4 | | 4.6 | 5.6 | 6.2 | 4.8 | 5.8 | 6.6 | 4.6 | 5.0 | 4.8 |
| 190 | 2.4 | 2.8 | | 4.0 | 4.8 | 5.4 | 4.2 | 5.0 | 5.8 | 4.0 | 4.8 | 4.8 |
| 195 | | | | 3.4 | 4.2 | 4.6 | 3.6 | 4.4 | 5.0 | 3.4 | 4.2 | 4.6 |
| 200 | | | | 2.8 | 3.6 | 4.0 | 3.0 | 3.8 | 4.4 | 2.8 | 3.6 | 4.4 |
| 205 | | | | 2.2 | 3.0 | | 2.4 | 3.2 | 3.8 | 2.2 | 3.0 | 3.8 |
| 210 | | | | | 2.4 | | | 2.6 | 3.2 | | 2.6 | 3.2 |
| 215 | | | | | | | | | 2.4 | | | 2.6 |

 197 ft. (60.0 m)
  43-72-98-125 ft. (13-22-30-38 m)
  94,700 lbs. (43,000 kg)
  100% 27' 3" Spread
  360°

| Feet | Pounds (thousands) | | | | | | | | | | | |
|------|--------------------|-----------|--------------------|-----------|--------------------|-----------|---------------------|-----------|--|--|--|--|
| | 43 FT 20° - 40° | | 72 FT 20° - 40° | | 98 FT 20° - 40° | | 125 FT 20° - 40° | | | | | |
| | 5° - 20° | 20° - 40° | 5° - 20° | 20° - 40° | 5° - 20° | 20° - 40° | 5° - 20° | 20° - 40° | | | | |
| 55 | 16.8 | | | | | | | | | | | |
| 60 | 16.8 | | | | | | | | | | | |
| 65 | 16.8 | | | | | | | | | | | |
| 70 | 16.8 | 16.4 | | | | | | | | | | |
| 75 | 16.8 | 16.4 | | 10.0 | | | | | | | | |
| 80 | 16.8 | 16.4 | | 9.8 | | | | | | | | |
| 85 | 16.6 | 16.4 | | 9.8 | | | | | | | | |
| 90 | 16.4 | 16.4 | | 9.8 | | | | | | | | |
| 95 | 16.2 | 16.4 | | 9.6 | 9.2 | | | | | | | |
| 100 | 15.8 | 16.2 | | 9.6 | 9.0 | 8.4 | | 5.8 | | | | |
| 105 | 15.4 | 15.8 | | 9.6 | 9.0 | 8.4 | 7.0 | 5.8 | | | | |
| 110 | 15.0 | 15.2 | | 9.6 | 9.0 | 8.4 | 7.0 | 5.8 | | | | |
| 115 | 14.4 | 14.4 | | 9.4 | 9.0 | 8.2 | 7.0 | 5.8 | | | | |
| 120 | 13.6 | 13.8 | | 9.4 | 9.0 | 8.0 | 7.0 | 5.8 | | | | |
| 125 | 12.8 | 13.2 | | 9.4 | 8.8 | 7.8 | 7.0 | 5.8 | | | | |
| 130 | 12.0 | 12.4 | | 9.4 | 8.8 | 7.8 | 7.0 | 5.6 | | | | |
| 135 | 11.0 | 11.8 | | 9.4 | 8.6 | 7.6 | 7.0 | 5.6 | | | | |
| 140 | 10.0 | 10.6 | | 9.4 | 8.6 | 7.4 | 7.0 | 5.4 | | | | |
| 145 | 8.8 | 9.4 | | 9.2 | 8.6 | 7.4 | 7.0 | 5.4 | | | | |
| 150 | 8.0 | 8.6 | | 9.0 | 8.6 | 7.2 | 6.8 | 5.2 | | | | |
| 155 | 7.0 | 7.6 | | 8.6 | 8.4 | 7.0 | 6.8 | 5.2 | | | | |
| 160 | 6.2 | 6.8 | | 7.8 | 8.4 | 7.0 | 6.6 | 5.0 | | | | |
| 165 | 5.4 | 6.0 | | 7.0 | 8.0 | 6.8 | 6.6 | 4.8 | | | | |
| 170 | 4.8 | 5.2 | | 6.2 | 7.2 | 6.4 | 6.4 | 4.8 | | | | |
| 175 | 4.0 | | | 5.4 | 6.4 | 5.6 | 6.2 | 4.6 | | | | |
| 180 | 3.4 | | | 4.8 | 5.6 | 5.0 | 5.8 | 4.6 | | | | |
| 185 | 2.8 | | | 4.2 | 5.0 | 4.4 | 5.2 | 4.2 | | | | |
| 190 | 2.2 | | | 3.6 | 4.4 | 3.8 | 4.6 | 3.6 | | | | |
| 195 | | | | 3.2 | 3.8 | 3.2 | 4.0 | 3.0 | | | | |
| 200 | | | | 2.6 | 3.2 | 2.6 | 3.4 | 2.6 | | | | |
| 205 | | | | | | 2.2 | 2.8 | 2.8 | | | | |
| 210 | | | | | | | 2.4 | 2.4 | | | | |



197 ft.
(60.0 m)



43-72-98-125 ft.
(13-22-30-38 m)



47,300 lbs.
(21,500 kg)



100%
27' 3" Spread



360°



Pounds (thousands)

| Feet | 43 FT | | | 72 FT | | | 98 FT | | | 125 FT | | |
|------|-------|------|------|-------|------|------|-------|-----|-----|--------|-----|-----|
| | 5° | 20° | 40° | 5° | 20° | 40° | 5° | 20° | 40° | 5° | 20° | 40° |
| 40 | 18.6 | | | | | | | | | | | |
| 45 | 18.6 | | | | | | | | | | | |
| 50 | 18.4 | | | | | | | | | | | |
| 55 | 18.4 | 18.6 | | 12.2 | | | | | | | | |
| 60 | 18.4 | 18.6 | | 12.2 | | | 9.2 | | | 6.4 | | |
| 65 | 18.2 | 18.4 | | 12.2 | | | 9.2 | | | 6.4 | | |
| 70 | 18.2 | 18.4 | 18.0 | 12.2 | | | 9.2 | | | 6.4 | | |
| 75 | 18.2 | 18.4 | 18.0 | 12.2 | 11.0 | | 9.2 | | | 6.4 | | |
| 80 | 18.2 | 18.4 | 18.0 | 12.2 | 10.8 | | 9.2 | | | 6.4 | | |
| 85 | 17.6 | 18.2 | 18.0 | 12.2 | 10.8 | | 9.2 | | | 6.4 | | |
| 90 | 15.6 | 17.0 | 18.0 | 12.2 | 10.8 | | 9.2 | 9.2 | | 6.4 | 6.4 | |
| 95 | 13.8 | 15.0 | 16.6 | 12.0 | 10.6 | 10.0 | 9.2 | 9.2 | | 6.4 | 6.4 | |
| 100 | 12.0 | 13.4 | 14.6 | 12.0 | 10.6 | 10.0 | 9.2 | 9.2 | 7.8 | 6.4 | 6.4 | |
| 105 | 10.4 | 11.8 | 13.0 | 12.0 | 10.6 | 10.0 | 9.2 | 9.2 | 7.8 | 6.4 | 6.4 | 6.4 |
| 110 | 9.0 | 10.2 | 11.4 | 10.6 | 10.4 | 10.0 | 9.2 | 9.2 | 7.8 | 6.4 | 6.4 | 6.4 |
| 115 | 7.8 | 8.8 | 9.8 | 9.2 | 10.4 | 9.8 | 9.0 | 9.0 | 7.8 | 6.4 | 6.4 | 6.4 |
| 120 | 6.6 | 7.6 | 8.6 | 8.2 | 10.0 | 9.8 | 7.8 | 8.8 | 7.8 | 6.4 | 6.4 | 6.4 |
| 125 | 5.6 | 6.4 | 7.2 | 7.0 | 8.8 | 9.8 | 6.8 | 8.6 | 7.8 | 6.4 | 6.2 | 6.2 |
| 130 | 4.6 | 5.4 | 6.2 | 6.0 | 7.8 | 9.6 | 5.8 | 7.6 | 7.8 | 5.4 | 6.2 | 6.2 |
| 135 | 3.6 | 4.4 | 5.0 | 5.0 | 6.8 | 8.4 | 5.0 | 6.6 | 7.8 | 4.6 | 6.0 | 6.0 |
| 140 | 2.6 | 3.4 | 4.0 | 4.2 | 5.8 | 7.4 | 4.0 | 5.6 | 7.4 | 3.8 | 5.4 | 5.8 |
| 145 | | 2.6 | 3.2 | 3.4 | 4.8 | 6.4 | 3.2 | 4.8 | 6.4 | 3.0 | 4.4 | 5.8 |
| 150 | | | 2.2 | 2.6 | 4.0 | 5.4 | 2.6 | 4.0 | 5.4 | 2.2 | 3.6 | 5.2 |
| 155 | | | | | 3.2 | 4.4 | | 3.2 | 4.6 | | 3.0 | 4.4 |
| 160 | | | | | 2.4 | 3.6 | | 2.4 | 3.6 | | 2.2 | 3.6 |
| 165 | | | | | | 2.8 | | | 3.0 | | | 2.8 |
| 170 | | | | | | | | | 2.2 | | | |



197 ft.
(60.0 m)



43-72-98-125 ft.
(13-22-30-38 m)



47,300 lbs.
(21,500 kg)



100%
27' 3" Spread



360°

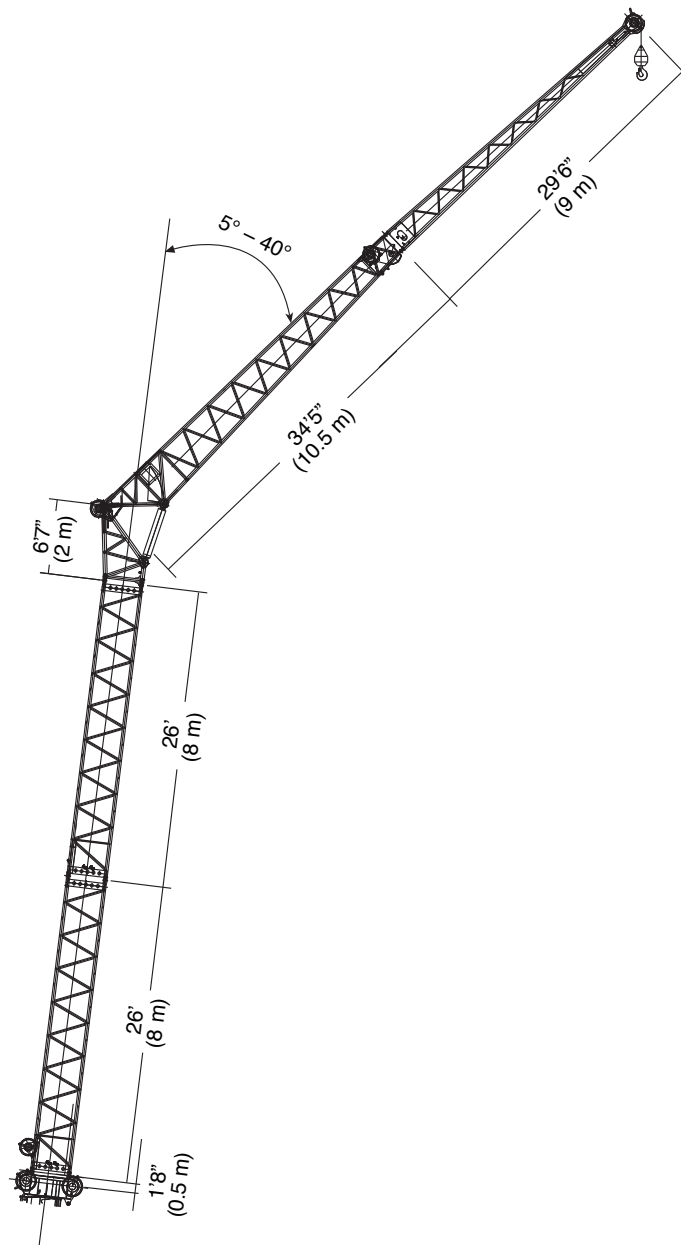


Pounds (thousands)

| Feet | 43 FT | | 72 FT | | 98 FT | | 125 FT | |
|------|----------|-----------|----------|-----------|----------|-----------|----------|-----------|
| | 5° - 20° | 20° - 40° | 5° - 20° | 20° - 40° | 5° - 20° | 20° - 40° | 5° - 20° | 20° - 40° |
| 55 | 16.8 | | | | | | | |
| 60 | 16.8 | | | | | | | |
| 65 | 16.8 | | | | | | | |
| 70 | 16.8 | 16.4 | | | | | | |
| 75 | 16.8 | 16.4 | | 10.0 | | | | |
| 80 | 16.8 | 16.4 | | 9.8 | | | | |
| 85 | 16.0 | 16.4 | | 9.8 | | | | |
| 90 | 14.2 | 15.4 | | 9.8 | | | | |
| 95 | 12.4 | 13.8 | | 9.6 | 9.2 | | | |
| 100 | 11.0 | 12.2 | | 9.6 | 9.0 | 8.4 | | 5.8 |
| 105 | 9.6 | 10.6 | | 9.6 | 9.0 | 8.4 | 7.0 | 5.8 |
| 110 | 8.2 | 9.2 | | 9.6 | 9.0 | 8.4 | 7.0 | 5.8 |
| 115 | 7.0 | 8.0 | | 8.4 | 9.0 | 8.2 | 7.0 | 5.8 |
| 120 | 6.0 | 7.0 | | 7.4 | 9.0 | 7.2 | 7.0 | 5.8 |
| 125 | 5.0 | 5.8 | | 6.4 | 8.0 | 6.2 | 7.0 | 5.8 |
| 130 | 4.0 | 4.8 | | 5.4 | 7.0 | 5.4 | 6.8 | 5.6 |
| 135 | 3.2 | 4.0 | | 4.6 | 6.0 | 4.4 | 6.0 | 5.4 |
| 140 | 2.4 | 3.2 | | 3.8 | 5.2 | 3.6 | 5.2 | 4.8 |
| 145 | | 2.4 | | 3.0 | 4.4 | 3.0 | 4.4 | 4.0 |
| 150 | | | | 2.4 | 3.6 | 2.2 | 3.6 | 3.4 |
| 155 | | | | | 3.0 | | 2.8 | 2.6 |
| 160 | | | | | 2.2 | | 2.2 | |

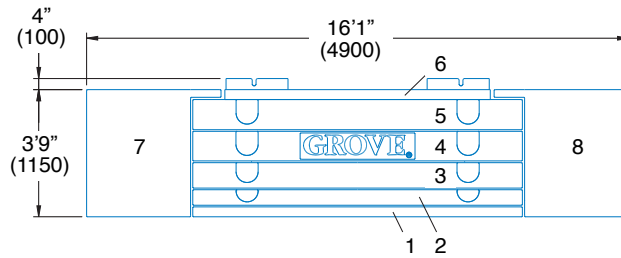
THIS CHART IS ONLY A GUIDE AND SHOULD NOT BE USED TO OPERATE THE CRANE. The individual crane's load chart, operating instructions and other instructional plates must be read and understood prior to operating the crane.

Boom extension configurations



| Length (ft.) | Intermediate section boom extension make-up | | | |
|--------------|---|---------------|-------------------|----------------|
| | 26' (8 m) | 6'7" (2 m) | 34'5" (10.5 m) | 29'6" (9 m) |
| 43 | — | 1x | 1x | — |
| 72 | — | 1x | 1x | 1x |
| 98 | 1x | 1x | 1x | 1x |
| 125 | 2x | 1x | 1x | 1x |

Counterweight configurations



1. 9,700 lbs. (4,400 kg)

2. 11,200 lbs. (5,100 kg)

3. 18,700 lbs. (8,500 kg)

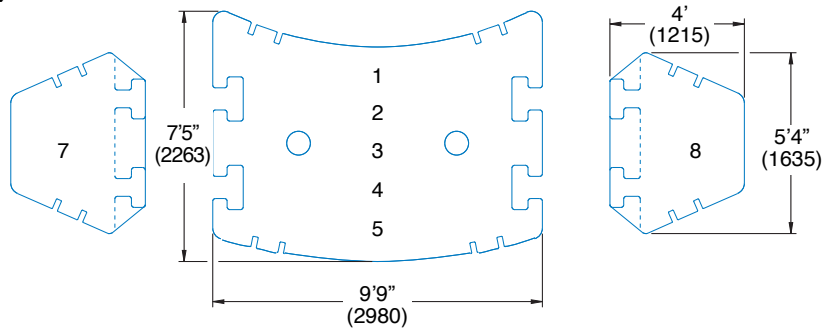
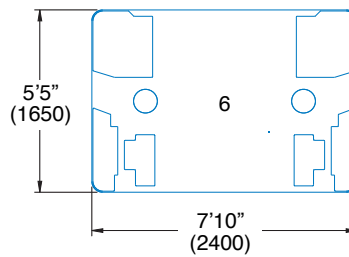
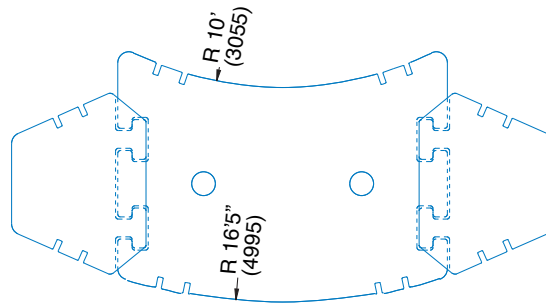
4. 24,300 lbs. (11,000 kg)

5. 23,100 lbs. (10,500 kg)


6. 7,700 lbs. (3,500 kg)

7. 22,050 lbs. (10,000 kg)

8. 22,050 lbs. (10,000 kg)



Note: () Reference dimensions in mm

| | 1 | 2 | 3 | 4 | 5 | 6 | 7 | 8 |
|---|---|---|---|---|---|---|---|---|
|  20,900 lbs. | X | X | | | | | | |
| 28,600 lbs. | X | X | | | | X | | |
| 47,300 lbs. | X | X | X | | | X | | |
| 71,600 lbs. | X | X | X | X | | X | | |
| 94,700 lbs. | X | X | X | X | X | X | | |
| 138,800 lbs. | X | X | X | X | X | X | X | X |

Rated Lifting Capacities

IMPORTANT NOTES:

WARNING: THIS CHART IS ONLY A GUIDE.
 The notes below are for illustration only and should not be relied upon to operate the crane. The individual crane's load chart, operating instructions and other instruction plates must be read and understood prior to operating the crane.

1. All rated loads meet ANSI/ASME B30.5, Mobile and Locomotive Cranes. Testing and development were performed to SAEJ1063, Cantilevered Boom Crane Structures - Method of Test and SAEJ765 Crane Stability Test Code.



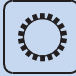





















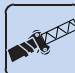
2. Capacities given do not include the weight of hook blocks, slings, auxiliary lifting equipment and load handling devices. Their weights must be added to the load to be lifted. When more than minimum required reeving is used, the additional rope weight shall be considered part of the load.

3. The machine shall be leveled on a firm supporting surface. Depending on the nature of the supporting surface, it may be necessary to have structural supports under the outrigger floats to spread the load to a larger bearing surface.

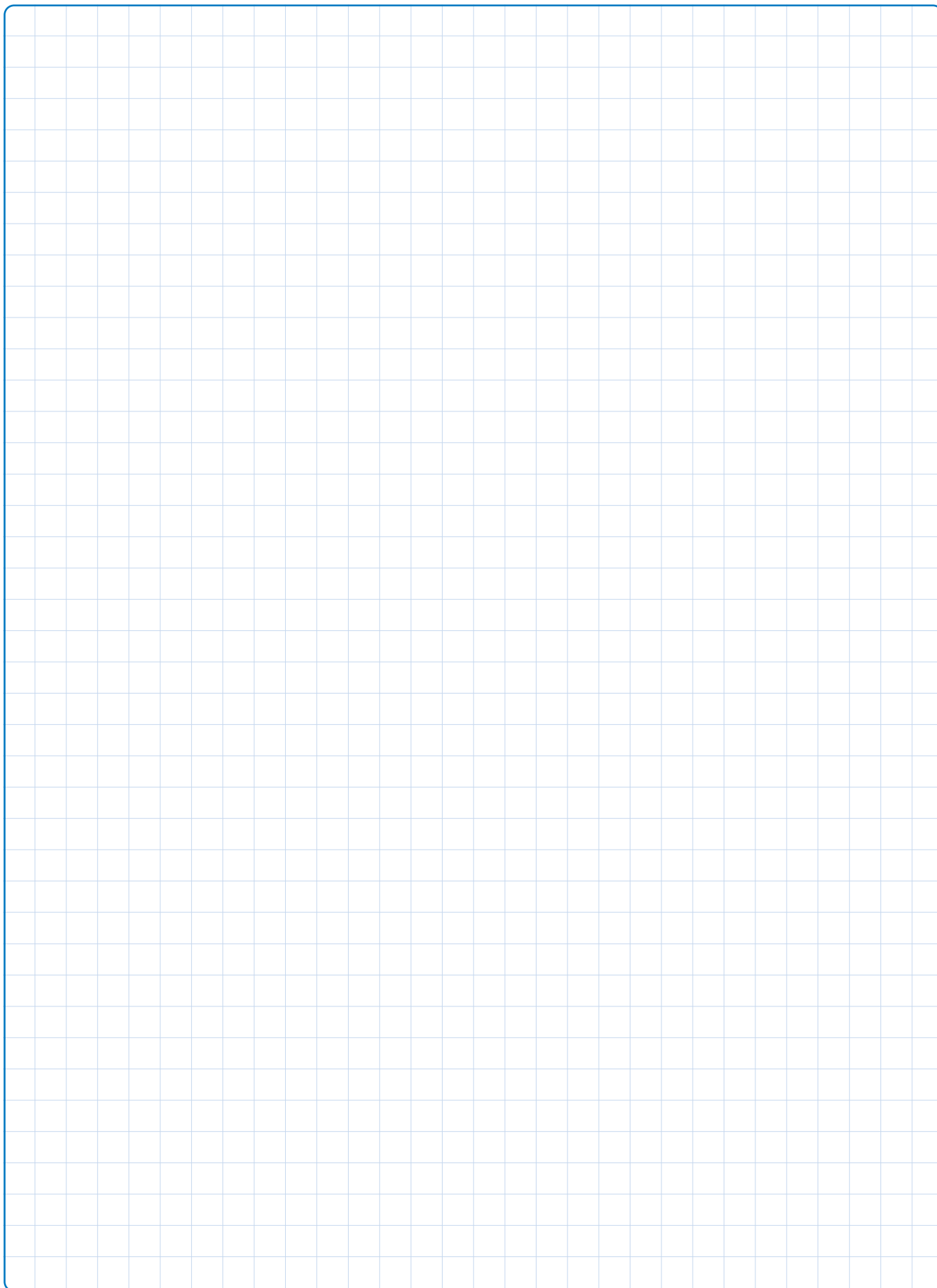
4. When either boom length or radius or both are between values listed, the smallest load shown at either the next larger radius or next longer or shorter boom length shall be used.

5. For outrigger operation, outriggers shall be properly extended with tires raised off the ground before operating the boom or lifting loads.

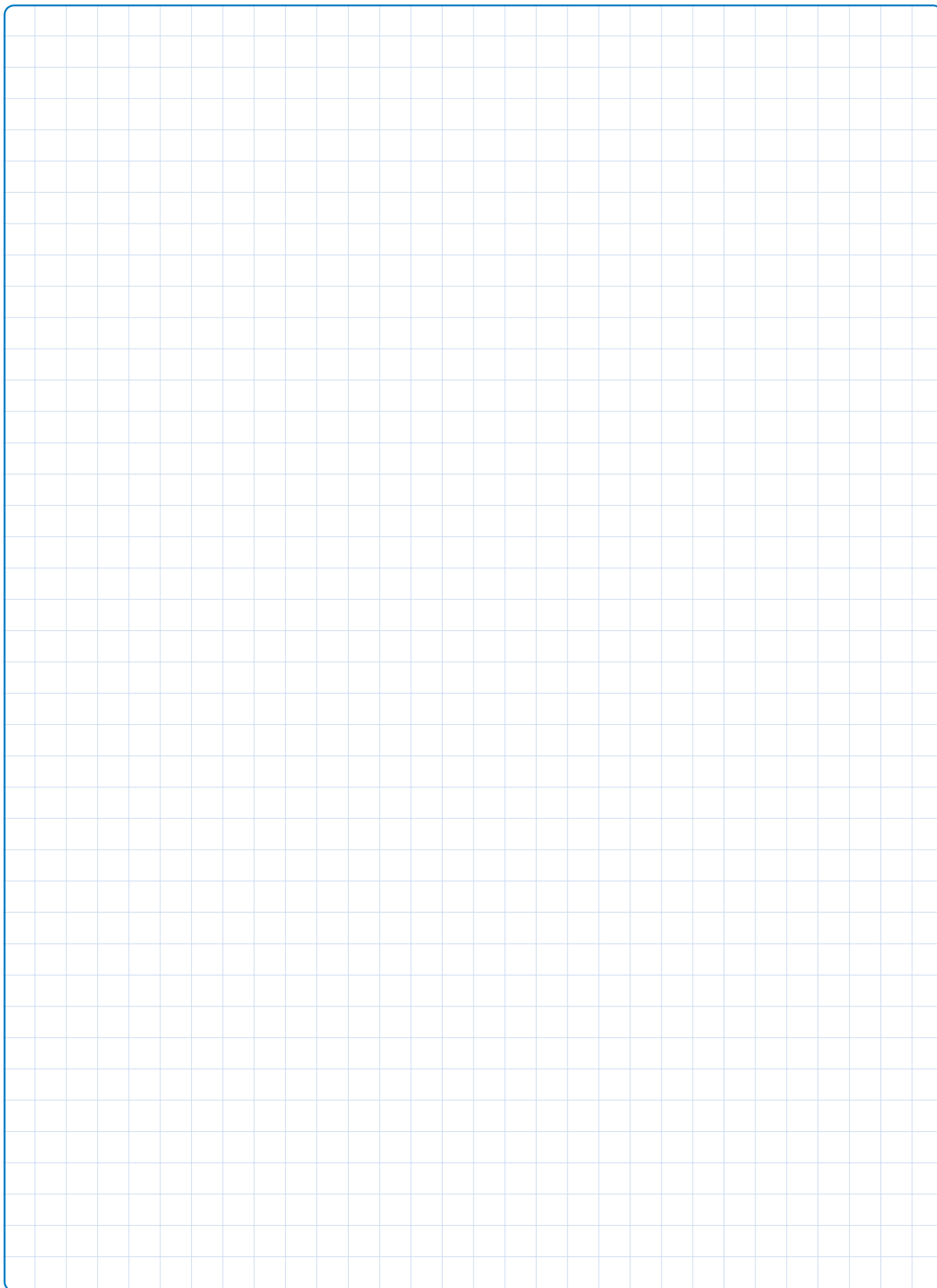
Symbols Glossary

| | | | |
|---|--------------------------------|---|------------------|
|  | Frame |  | Steering |
|  | Outriggers |  | Transmission |
|  | Outrigger Controls |  | Axles |
|  | Engine |  | Brakes |
|  | Fuel Tank Capacity |  | Tires |
|  | Electrical System |  | Suspension |
|  | Drive |  | Rotation |
|  | Lights |  | Boom Elevation |
|  | Cab |  | Swing |
|  | Boom |  | Counterweight |
|  | Fixed Swingaway |  | Oil |
|  | Tele-Swingaway |  | Hydraulic System |
|  | Lattice Extension (Luffing) |  | Hoist |
|  | Boom Nose |  | Radius |
|  | Boom Extension |  | Boom Length |
|  | Speed |  | Hookblock |
|  | Grade |  | Gear |
|  | Lattice Extension |  | Luffing Jib |

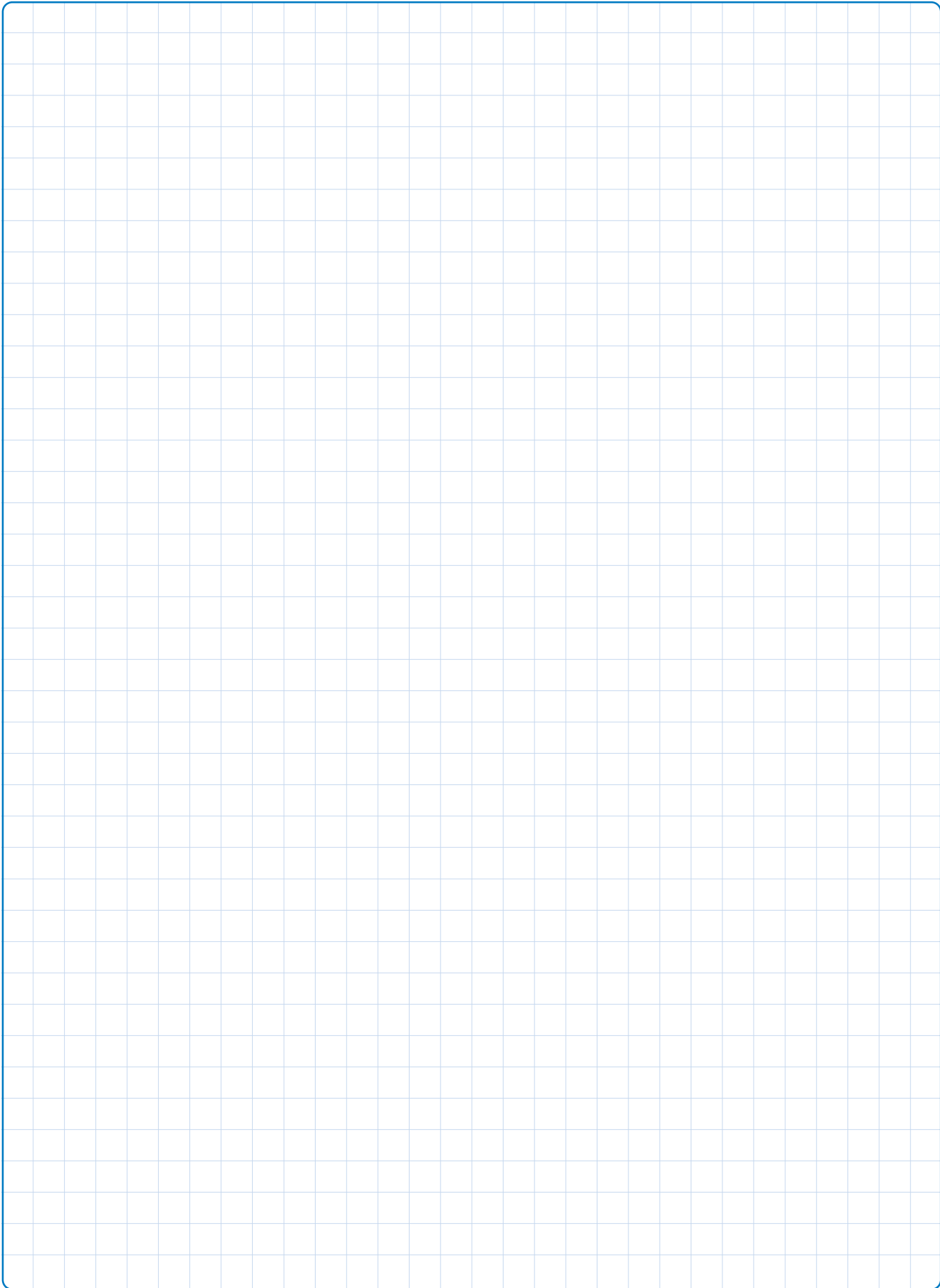
Notes

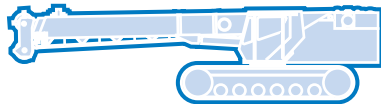
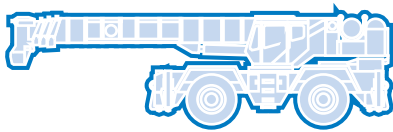
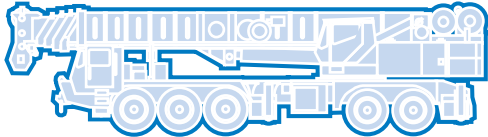
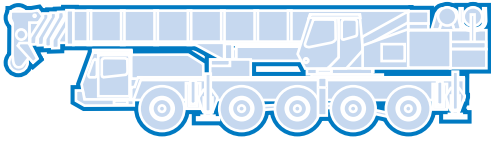


Notes



Notes





Grove Worldwide – World Headquarters
Grove U.S. L.L.C.
 1565 Buchanan Trail East
 P.O. Box 21
 Shady Grove, Pennsylvania 17256, U.S.A.
 Tel: [Int + 1] (717) 597-8121
 Fax: [Int + 1] (717) 597-4062
 Western Hemisphere, Asia/Pacific

Grove Europe Limited*
 Sunderland SR4 6TT, England
 Tel: [Int + 44] 191 565-6281
 Fax: [Int + 44] 191 564-0442
 Europe, Africa, Middle East

Grove Europe Limited*
 Telford Road, Bicester
 Oxfordshire, OX6 0TZ
 Tel: [Int + 44] 1869 878-890
 Fax: [Int + 44] 1869 878-891
 *Grove Europe Limited, Registered in England,
 Number 1845128, Registered office, Crown Works,
 Pallion, Sunderland, Tyne & Wear, England SR4 6TT

Deutsche Grove GmbH
 Sales and Service
 Helmholtzstrasse 12, Postfach 5026
 D-40750 Langenfeld, Germany
 Tel: [Int + 49] (2173) 8909-0
 Fax: [Int + 49] (2173) 8909-30

Wilhelmshaven Works
 Industriegelände West, Postfach 1853
 D-26358 Wilhelmshaven, Germany
 Tel: [Int + 49] (4421) 294-0
 Fax: [Int + 49] (4421) 294-301

Grove France S.A.
 16, chaussée Jules-César, 95520 OSNY
 B.P. 203, 95523 CERGY PONTOISE CEDEX
 France
 Tel: [Int + 33] (1) 30313150
 Fax: [Int + 33] (1) 30386085

Grove Asia/Pacific - Regional Office
 171 Chin Swee Road
 #10-09 San Centre
 Singapore 16987
 Tel: [Int + 65] 536-6112
 Fax: [Int + 65] 536-6119
 Asia/Pacific, Near East

Grove China - Representative Office
 Room 713, Towercrest Plaza
 No. 3 Mai Zi Dian West Road
 Chao Yang District
 Beijing, China 100016
 Tel: [Int + 86] (10) 64 67 16 90
 Fax: [Int + 86] (10) 64 67 16 91

Grove Lifetime Customer Support
 Western Hemisphere, Asia/Pacific
 1086 Wayne Avenue
 Chambersburg, Pennsylvania USA
 Tel: [Int + 1] (717) 263-5100
 Fax: [Int + 1] (717) 267-0404

Europe, Africa, Middle East
 Sunderland SR4 6TT, England
 Tel: [Int + 44] 191 565-6281
 Parts Fax: [Int + 44] 191 515-7475
 Service Fax: [Int + 44] 191 515-7340

<http://www.grovetworldwide.com>

Constant improvement and engineering progress make it necessary that we reserve the right to make specification, equipment, and price changes without notice. Illustrations shown may include optional equipment and accessories and may not include all standard equipment.

Distributed By:

